

bs-1108R**[Primary Antibody]**

Bioss
ANTIBODIES

www.bioss.com.cn

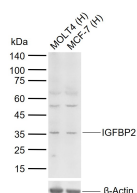
sales@bioss.com.cn

techsupport@bioss.com.cn

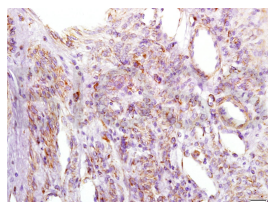
400-901-9800

IGFBP2 Rabbit pAb**DATASHEET**

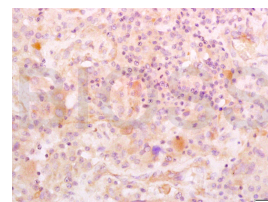
Host: Rabbit Clonality: Polyclonal GeneID: 3485 Target: IGFBP2 Immunogen: KLH conjugated synthetic peptide derived from human IGFBP2: 101-200/305. Purification: affinity purified by Protein A Concentration: 1mg/ml Storage: 0.01M TBS (pH7.4) with 1% BSA, 0.02% Proclin300 and 50% Glycerol. Shipped at 4°C. Store at -20°C for one year. Avoid repeated freeze/thaw cycles. Background: IGFBP2 (insulin-like growth factor binding protein 2) is a member of the ISGBP family which bind various IGFs. IGFBP2 is overexpressed in a wide spectrum of other cancers, including glioma, prostate cancer, synovial sarcoma, neuroblastoma, colon cancer, adrenocortical cancer, lung cancer, Wilms' tumor, and hepatoblastoma. The overexpression of IGFBP2 also correlates with the aggressiveness of some tumors. IGFBP2 activates the expression of matrix metalloprotease 2, which contributes to cell invasiveness	Isotype: IgG SWISS: P18065	Applications: WB (1:500-2000) IHC-P (1:100-500) IHC-F (1:100-500) IF (1:100-500) Reactivity: Human (predicted: Mouse, Rat) Predicted MW.: 36 kDa Subcellular Location: Secreted
---	---	---

VALIDATION IMAGES

Sample: Lane 1: Human MOLT4 cell lysates Lane 2: Human MCF-7 cell lysates Primary: Anti-IGFBP2 (bs-1108R) at 1/1000 dilution Secondary: IRDye800CW Goat Anti-Rabbit IgG at 1/20000 dilution Predicted band size: 36 kDa Observed band size: 36 kDa



Tissue/cell: human cervical carcinoma; 4% Paraformaldehyde-fixed and paraffin-embedded; Antigen retrieval: citrate buffer (0.01M, pH 6.0), Boiling bathing for 15min; Block endogenous peroxidase by 3% Hydrogen peroxide for 30min; Blocking buffer (normal goat serum, C-0005) at 37°C for 20 min; Incubation: Anti-IGFBP2 Polyclonal Antibody, Unconjugated(bs-1108R) 1:100, overnight at 4°C, followed by conjugation to the secondary antibody(SP-0023) and DAB(C-0010) staining



Tissue/cell: human glioma tissue; 4% Paraformaldehyde-fixed and paraffin-embedded; Antigen retrieval: citrate buffer (0.01M, pH 6.0), Boiling bathing for 15min; Block endogenous peroxidase by 3% Hydrogen peroxide for 30min; Blocking buffer (normal goat serum, C-0005) at 37°C for 20 min; Incubation: Anti-IGFBP2 Polyclonal Antibody, Unconjugated(bs-1108R) 1:200, overnight at 4°C, followed by conjugation to the secondary antibody(SP-0023) and DAB(C-0010) staining

SELECTED CITATIONS

- **[IF=6.792]** Zhao D et al. PCB52 exposure alters the neurotransmission ligand-receptors in male offspring and contributes to sex-specific neurodevelopmental toxicity. Environ Pollut.2020 Sep;264:114715. WB ;Rat. 32402713
- **[IF=5.6]** Dae-Hyun Lee. et al. Increased IGFBP2 Levels by Placenta-Derived Mesenchymal Stem Cells Enhance Glucose Metabolism in a TAA-Injured Rat Model via AMPK Signaling Pathway. INT J MOL SCI. 2023 Jan;24(22):16531 WB,IF ;Rat. 38003735
- **[IF=5.7]** Nicole Recka. et al. Epidermal loss of PRMT5 leads to the emergence of an atypical basal keratinocyte-like cell

Important Note: This product as supplied is intended for research use only, not for use in human, therapeutic or diagnostic applications.

- population and defective skin stratification. J INVEST DERMATOL. 2025 May;; IF ;Mouse. 40339790
- **[IF=2.776]** Liu Y et al. IGFBP2 promotes immunosuppression associated with its mesenchymal induction and FcγRIIB phosphorylation in glioblastoma. PLoS One. 2019 Sep 27;14(9):e0222999. IHC,WB,FCM ;Mouse. 31560714
 - **[IF=3.464]** Xiubing Chen. et al. Differential Plasma Proteins Identified via iTRAQ-Based Analysis Serve as Diagnostic Markers of Pancreatic Ductal Adenocarcinoma. DIS MARKERS. 2023 Jan 20;2023:5145152 IHC ;Human. 36712921