

bs-7185R**[Primary Antibody]****ZNF223 Rabbit pAb****BioSS**
ANTIBODIES

www.bioss.com.cn

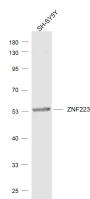
sales@bioss.com.cn

techsupport@bioss.com.cn

400-901-9800

— DATASHEET —

Host: Rabbit	Isotype: IgG	Applications: WB (1:500-2000)
Clonality: Polyclonal		Reactivity: Human
GeneID: 7766	SWISS: Q9UK11	
Target: ZNF223		
Immunogen: KLH conjugated synthetic peptide derived from human ZNF223: 401-481/481.		Predicted MW.: 56 kDa
Purification: affinity purified by Protein A		Subcellular Location: Nucleus
Concentration: 1mg/ml		
Storage: 0.01M TBS (pH7.4) with 1% BSA, 0.02% Proclin300 and 50% Glycerol. Shipped at 4°C. Store at -20°C for one year. Avoid repeated freeze/thaw cycles.		
Background: This gene encodes a protein containing a Kruppel-associated box domain and multiple zinc finger domains. The function of this protein has yet to be determined. [provided by RefSeq, Mar 2014]		

— VALIDATION IMAGES —

Sample: SH-SY5Y (Human) Cell Lysate at 30 ug
Primary: Anti-ZNF223 (bs-7185R) at 1/1000
dilution Secondary: IRDye800CW Goat Anti-
Rabbit IgG at 1/20000 dilution Predicted band
size: 56 kD Observed band size: 56 kD