

**bs-7179R**

**[ Primary Antibody ]**

## ZNF20 Rabbit pAb

**BioSS**  
ANTIBODIES

www.bioss.com.cn

sales@bioss.com.cn

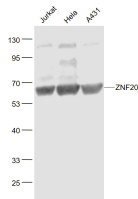
techsupport@bioss.com.cn

400-901-9800

### — DATASHEET —

<b>Host:</b> Rabbit	<b>Isotype:</b> IgG	<b>Applications:</b> WB (1:500-2000)
<b>Clonality:</b> Polyclonal		
<b>GeneID:</b> 7568	<b>SWISS:</b> P17024	
<b>Target:</b> ZNF20		
<b>Immunogen:</b> KLH conjugated synthetic peptide derived from human ZNF20: 101-200/532.		
<b>Purification:</b> affinity purified by Protein A		
<b>Concentration:</b> 1mg/ml		<b>Reactivity:</b> Human
<b>Storage:</b> 0.01M TBS (pH7.4) with 1% BSA, 0.02% Proclin300 and 50% Glycerol. Shipped at 4°C. Store at -20°C for one year. Avoid repeated freeze/thaw cycles.		<b>Predicted MW.:</b> 62 kDa
<b>Background:</b> ZNF20 (Zinc Finger Protein 20) is a Protein Coding gene. Diseases associated with ZNF20 include Endocervical Carcinoma and Endocervical Adenocarcinoma. Among its related pathways are Gene Expression and Herpes simplex virus 1 infection. Gene Ontology (GO) annotations related to this gene include nucleic acid binding. An important paralog of this gene is ZNF440.		<b>Subcellular Location:</b> Nucleus

### — VALIDATION IMAGES —



Sample: Jurkat(Human) Cell Lysate at 30 ug  
Hela(Human) Cell Lysate at 30 ug A431(Human)  
Cell Lysate at 30 ug Primary: Anti- ZNF20  
(bs-7179R) at 1/1000 dilution Secondary:  
IRDye800CW Goat Anti-Rabbit IgG at 1/20000  
dilution Predicted band size: 62 kD Observed  
band size: 62 kD