

bs-41161R

[Primary Antibody]

mCherry Rabbit pAb

BioSS
ANTIBODIES

www.bioss.com.cn

sales@bioss.com.cn

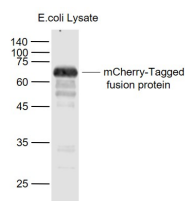
techsupport@bioss.com.cn

400-901-9800

— DATASHEET —

| | | |
|---|---------------------|--|
| Host: Rabbit | Isotype: IgG | Applications: WB (1:1000-5000) ELISA (1:1000-5000) |
| Clonality: Polyclonal | | Reactivity: Species independent |
| Target: mCherry | | |
| Purification: affinity purified by Protein A | | |
| Concentration: 1mg/ml | | |
| Storage: 0.01M TBS (pH7.4) with 1% BSA, 0.02% Proclin300 and 50% Glycerol. Shipped at 4°C. Store at -20°C for one year. Avoid repeated freeze/thaw cycles. | | |
| Background: mCherry is a fluorophore (a fluorescent molecule) used in biotechnology as a tracer to follow the flow of fluids, as a marker when tagged to molecules and cells components. mCherry is a monomeric fluorescent construct with peak absorption/emission at 587 nm and 610 nm, respectively. It is resistant to photobleaching and is stable. mCherry is sometimes preferred to other fluorophores due to its colour, as well as its photostability compared to other monomeric fluorophores. | | |

— VALIDATION IMAGES —



Sample: Lane 1: mCherry-tagged fusion protein
Overexpression E.coli Lysate (Cat#: bs-33131P)
at 4 ug Primary: Anti- mCherry-Tag (bs-41161R)
at 1/1000 dilution Secondary: IRDye800CW Goat
Anti-Rabbit IgG at 1/20000 dilution Predicted
band size: 70 kD Observed band size: 70 kD