

bs-0227R**[Primary Antibody]****IGF1R Rabbit pAb****BioSS**
ANTIBODIES

www.bioss.com.cn

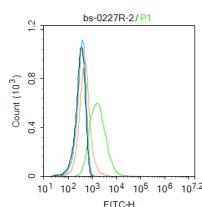
sales@bioss.com.cn

techsupport@bioss.com.cn

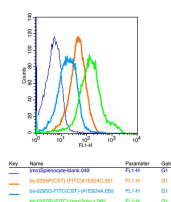
400-901-9800

DATASHEET

Host: Rabbit Clonality: Polyclonal GeneID: 3480 Target: IGF1R Immunogen: KLH conjugated synthetic peptide derived from human IGF-1R alpha chain: 251-350/1367. Purification: affinity purified by Protein A Concentration: 1mg/ml Storage: 0.01M TBS (pH7.4) with 1% BSA, 0.02% Proclin300 and 50% Glycerol. Shipped at 4°C. Store at -20°C for one year. Avoid repeated freeze/thaw cycles. Background: This receptor binds insulin-like growth factor 1 (IGF1) with a high affinity and IGF2 with a lower affinity. It has a tyrosine-protein kinase activity, which is necessary for the activation of the IGF1-stimulated downstream signaling cascade. When present in a hybrid receptor with INSR, binds IGF1. PubMed:12138094 shows that hybrid receptors composed of IGF1R and INSR isoform Long are activated with a high affinity by IGF1, with low affinity by IGF2 and not significantly activated by insulin, and that hybrid receptors composed of IGF1R and INSR isoform Short are activated by IGF1, IGF2 and insulin. In contrast, PubMed:16831875 shows that hybrid receptors composed of IGF1R and INSR isoform Long and hybrid receptors composed of IGF1R and INSR isoform Short have similar binding characteristics, both bind IGF1 and have a low affinity for insulin.	Isotype: IgG SWISS: P08069 Applications: Flow-Cyt (1µg/Test) Reactivity: Human, Mouse (predicted: Rat, Rabbit, Pig, Sheep, Cow, Dog, Horse) Predicted MW.: 78/150 kDa Subcellular Location: Cell membrane
---	---

VALIDATION IMAGES

Blank control: MCF7. Primary Antibody (green line): Rabbit Anti-IGF1R antibody (bs-0227R)
Dilution: 2µg/10⁶ cells; Isotype Control Antibody (orange line): Rabbit IgG. Secondary Antibody: Goat anti-rabbit IgG-FITC Dilution: 1µg/test. Protocol The cells were incubated in 5%BSA to block non-specific protein-protein interactions for 30 min at room temperature .Cells stained with Primary Antibody for 30 min at room temperature. The secondary antibody used for 40 min at room temperature. Acquisition of 20,000 events was performed.



Positive control: (mo)Splenocytes(2% Paraformaldehyde-fixed) Isotype Control Antibody Antibody: Rabbit IgG; Supplier: Cell Signaling Technology; Dilution: 1µg in 100 µl 1 X PBS containing 0.5% BSA Secondary Antibody Antibody: Goat anti-rabbit IgG-FITC; Supplier: Cell Signaling Technology; Dilution: 1:200 in 1 X PBS containing 0.5% BSA Primary Antibody Supplier: Bioss; Supplier catalog number: bs-0227R; Dilution: 1µg in 100 µl 1X PBS containing 0.5% BSA

SELECTED CITATIONS

- **[IF=20.693]** Pei Dai. et al. Gimap5 promoted RSV degradation through interaction with M6PR. J MED VIROL. 2022 Dec;; WB ;Human. 36484389
- **[IF=9.429]** Xu, Kaiwei. et al. IGF1 receptor-targeted black TiO2 nanoprobe for MRI-guided synergetic photothermal-

Important Note: This product as supplied is intended for research use only, not for use in human, therapeutic or diagnostic applications.

- chemotherapy in drug resistant pancreatic tumor. J NANOBIOTECHNOL. 2022 Dec;20(1):1-17 WB ;Human. 35794573
- **[IF=6.304]** Xuemei Shen. et al. CircRILPL1 promotes muscle proliferation and differentiation via binding miR-145 to activate IGF1R/PI3K/AKT pathway. Cell Death Dis. 2021 Feb;12(2):1-14 WB ;Bovine. 33542215
 - **[IF=4.711]** Yurie Yamamoto. et al. Establishment of a gastric cancer cell line with high microsatellite instability, OCUM-13, derived from Borrmann type-2 primary tumor. CANCER MED-US. 2022 Nov;; IHC ;Human. 36324252
 - **[IF=2.784]** Liu et al. Ghrelin protects the myocardium with hypoxia/reoxygenation treatment through upregulating the expression of growth hormone, growth hormone secretagogue receptor and insulin-like growth factor-1, and promoting the phosphorylation of protein kinase B. (2018) Int.J.Mol.Med. 42:3037-3046 WB,IHC ;Rat. 30272367