

bs-24622R**[Primary Antibody]****PNPLA1 Rabbit pAb****BioSS**
ANTIBODIES

www.bioss.com.cn

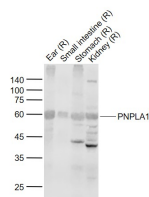
sales@bioss.com.cn

techsupport@bioss.com.cn

400-901-9800

— DATASHEET —

Host: Rabbit	Isotype: IgG	Applications: WB (1:500-2000)
Clonality: Polyclonal		Reactivity: Rat (predicted: Human, Mouse, Rabbit, Pig, Sheep, Cow, Dog, Horse)
GeneID: 285848	SWISS: Q8N8W4	
Target: PNPLA1		Predicted MW.: 58 kDa
Immunogen: KLH conjugated synthetic peptide derived from human PNPLA1: 1-100/532.		Subcellular Location: Cytoplasm
Purification: affinity purified by Protein A		
Concentration: 1mg/ml		
Storage: 0.01M TBS (pH7.4) with 1% BSA, 0.02% Proclin300 and 50% Glycerol. Shipped at 4°C. Store at -20°C for one year. Avoid repeated freeze/thaw cycles.		
Background: PNPLA1 functions as a lipid hydrolase. Human patatin-like phospholipases, such as PNPLA1, have been implicated in regulation of adipocyte differentiation and have been induced by metabolic stimuli.		

— VALIDATION IMAGES —

Sample: Lane 1: Ear (Rat) Tissue Lysate at 40 ug
Lane 2: Small intestine (Rat) Tissue Lysate at 40 ug
Lane 3: Stomach (Rat) Tissue Lysate at 40 ug
Lane 4: Kidney (Rat) Tissue Lysate at 40 ug
Primary: Anti-PNPLA1 (bs-24622R) at 1/1000 dilution
Secondary: IRDye800CW Goat Anti-Rabbit IgG at 1/20000 dilution
Predicted band size: 58 kD
Observed band size: 58 kD