

**bs-3512R****[ Primary Antibody ]****NUMA1 Rabbit pAb****BioSS**  
**ANTIBODIES**

www.bioss.com.cn

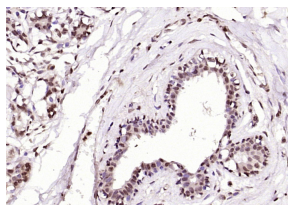
sales@bioss.com.cn

techsupport@bioss.com.cn

400-901-9800

**— DATASHEET —**

<b>Host:</b> Rabbit <b>Clonality:</b> Polyclonal <b>GeneID:</b> 4926 <b>Target:</b> NUMA1 <b>Immunogen:</b> KLH conjugated synthetic peptide derived from human NuMA: 1001-1200/2115. <b>Purification:</b> affinity purified by Protein A <b>Concentration:</b> 1mg/ml <b>Storage:</b> 0.01M TBS (pH7.4) with 1% BSA, 0.02% Proclin300 and 50% Glycerol. Shipped at 4°C. Store at -20°C for one year. Avoid repeated freeze/thaw cycles. <b>Background:</b> Healthy individuals generally have very small amounts of NMP22 protein in the urine. However, the level of NMP22 protein is often elevated in the urine of patients with bladder cancer, even at early stages of the disease. <sup>1</sup> The Alere NMP22 Test is an enzyme immunoassay for the quantitative determination of nuclear mitotic apparatus protein (NuMA) in stabilized voided urine. NuMA is an abundant component of the nuclear matrix proteins (NMP22). The Alere NMP22?BladderChek?Test is the only in-office test approved by the FDA as an aid in the diagnosis and monitoring of bladder cancer in conjunction with standard diagnostic procedures. Both assays are painless and non-invasive and detect elevated levels of NMP22 protein.	<b>Isotype:</b> IgG <b>SWISS:</b> Q14980	<b>Applications:</b> IHC-P (1:100-500) IHC-F (1:100-500) IF (1:100-500) <b>Reactivity:</b> Human (predicted: Mouse, Rat, Dog) <b>Predicted MW.:</b> 238 kDa <b>Subcellular Location:</b> Cytoplasm ,Nucleus
---	---	--

**— VALIDATION IMAGES —**

Paraformaldehyde-fixed, paraffin embedded (human breast); Antigen retrieval by boiling in sodium citrate buffer (pH6.0) for 15min; Block endogenous peroxidase by 3% hydrogen peroxide for 20 minutes; Blocking buffer (normal goat serum) at 37°C for 30min; Antibody incubation with (NuMA) Polyclonal Antibody, Unconjugated (bs-3512R) at 1:200 overnight at 4°C, followed by operating according to SP Kit(Rabbit) (sp-0023) instructions and DAB staining.