

PTGFR Rabbit pAb

Catalog Number: bs-10433R

Target Protein: PTGFR

Concentration: 1mg/ml

Form: Liquid

Host: Rabbit

Clonality: Polyclonal

Isotype: IgG

Applications: WB (1:500-2000)

Reactivity: Human, Mouse (predicted:Rat, Rabbit, Dog, Horse)

Predicted MW: 40 kDa

Entrez Gene: 5737

Swiss Prot: P43088

Source: KLH conjugated synthetic peptide derived from human PTGFR: 121-220/359.

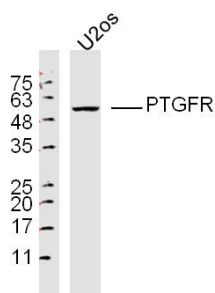
Purification: affinity purified by Protein A

Storage: 0.01M TBS (pH7.4) with 1% BSA, 0.02% Proclin300 and 50% Glycerol.

Shipped at 4°C. Store at -20°C for one year. Avoid repeated freeze/thaw cycles.

Background: The protein encoded by this gene is member of the G-protein coupled receptor family. This protein is a receptor for prostaglandin F2-alpha (PGF2-alpha), which is known to be a potent luteolytic agent, and may also be involved in modulating intraocular pressure and smooth muscle contraction in uterus. Knockout studies in mice suggest that the interaction of PGF2-alpha with this receptor may initiate parturition in ovarian luteal cells and thus induce luteolysis. Two transcript variants encoding different isoforms have been found for this gene. [provided by RefSeq, Jul 2008]

VALIDATION IMAGES



Protein: U2os(human) lysates at 40ug; Primary: Anti-PTGFR (bs-10433R) at 1:300; Secondary: HRP conjugated Goat-Anti-Rabbit IgG(bse-0295G-HRP) at 1: 5000; ECL excited the fluorescence; Predicted band size :40 kD
Observed band size :50 kD

PRODUCT SPECIFIC PUBLICATIONS

[IF=1.66] Xueqiang Qinet al. Effects of non-esterified fatty acids on relative abundance of prostaglandin E2 and F2 α synthesis-related mRNA transcripts and protein in endometrial cells of cattle in vitro. Anim Reprod Sci . 2020 Oct;221:106549. IF ; Bovine . 32861111