

bs-13983R**[Primary Antibody]****COPZ2 Rabbit pAb****Bioss**
ANTIBODIES

www.bioss.com.cn

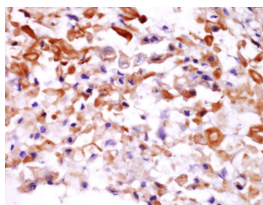
sales@bioss.com.cn

techsupport@bioss.com.cn

400-901-9800

— DATASHEET —

Host: Rabbit	Isotype: IgG	Applications: IHC-P (1:100-500) IHC-F (1:100-500) IF (1:100-500) Reactivity: Human (predicted: Mouse, Rat, Rabbit, Sheep, Cow) Predicted MW.: 24 kDa Subcellular Location: Cytoplasm
Clonality: Polyclonal		
GeneID: 51226	SWISS: Q9P299	
Target: COPZ2		
Immunogen: KLH conjugated synthetic peptide derived from human COPZ2: 151-210/210.		
Purification: affinity purified by Protein A		
Concentration: 1mg/ml		
Storage: 0.01M TBS (pH7.4) with 1% BSA, 0.02% Proclin300 and 50% Glycerol. Shipped at 4°C. Store at -20°C for one year. Avoid repeated freeze/thaw cycles.		
Background: This gene encodes a subunit of the coatamer protein complex, a seven-subunit complex that functions in the formation of COPI-type, non-clathrin-coated vesicles. COPI vesicles function in the retrograde Golgi-to-ER transport of dilysine-tagged proteins. This gene is similar to a related family member, and the two encoded proteins form distinct isotypes of the coatamer protein complex. [provided by RefSeq, Jul 2008]		

— VALIDATION IMAGES —

Tissue/cell: human laryngocarcinoma; 4% Paraformaldehyde-fixed and paraffin-embedded; Antigen retrieval: citrate buffer (0.01M, pH 6.0), Boiling bathing for 15min; Block endogenous peroxidase by 3% Hydrogen peroxide for 30min; Blocking buffer (normal goat serum, C-0005) at 37°C for 20 min; Incubation: Anti-COPZ2 Polyclonal Antibody, Unconjugated(bs-13983R) 1:400, overnight at 4°C, followed by conjugation to the secondary antibody(SP-0023) and DAB(C-0010) staining