

---

## phospho-COP1 (Ser387) Rabbit pAb

Catalog Number: bs-13976R

Target Protein: phospho-COP1 (Ser387)

Concentration: 1mg/ml

Form: Liquid

Host: Rabbit

Clonality: Polyclonal

Isotype: IgG

Applications: IHC-P (1:100-500), IHC-F (1:100-500), IF (1:100-500)

Reactivity: Rat (predicted:Human, Mouse, Sheep, Cow, Horse)

Predicted MW: 80 kDa

Subcellular Cytoplasm ,Nucleus

Locations:

Entrez Gene: 64326

Swiss Prot: Q8NHY2

Source: KLH conjugated synthesised phosphopeptide derived from human COP1 around the phosphorylation site of Ser387: TA(p-S)QL.

Purification: affinity purified by Protein A

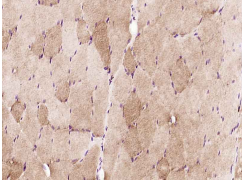
Storage: 0.01M TBS (pH7.4) with 1% BSA, 0.02% Proclin300 and 50% Glycerol.

Shipped at 4°C. Store at -20°C for one year. Avoid repeated freeze/thaw cycles.

**Background:** COP1 is an E3 ubiquitin ligase protein that mediates ubiquitination and degradation of target proteins such as c-Jun and p53. It is a component of the DCX DET1-COP1 ubiquitin ligase complex which consists of RBX1, DET1, DDB1, CUL4A and COP1. Localizing to the cytoplasm and to the nucleus, COP1 is primarily expressed in testis, placenta, heart and skeletal muscle. COP1 is a potent inhibitor of p53-dependent transcription and apoptosis but, when phosphorylated by Atm (ataxia telangiectasia mutated) in response to DNA damage, the COP1-p53 complex is disrupted and p53 is allowed to exert its pro-apoptotic properties. In ovarian and breast cancers, COP1 is overexpressed, suggesting a role for COP1 in tumorigenesis.

### VALIDATION IMAGES

---



Paraformaldehyde-fixed, paraffin embedded (Rat skeletal muscle); Antigen retrieval by boiling in sodium citrate buffer (pH6.0) for 15min; Block endogenous peroxidase by 3% hydrogen peroxide for 20 minutes; Blocking buffer (normal goat serum) at 37°C for 30min; Antibody incubation with (phospho-COP1 (Ser387)) Polyclonal Antibody, Unconjugated (bs-13976R) at 1:400 overnight at 4°C, followed by operating according to SP Kit(Rabbit) (sp-0023) instructions and DAB staining.