

**bs-6620R****[ Primary Antibody ]****CRHR2 Rabbit pAb****BioSS**  
**ANTIBODIES**

www.bioss.com.cn

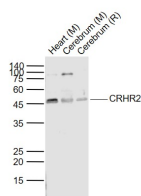
sales@bioss.com.cn

techsupport@bioss.com.cn

400-901-9800

**— DATASHEET —**

<b>Host:</b> Rabbit	<b>Isotype:</b> IgG	<b>Applications:</b> WB (1:500-2000)
<b>Clonality:</b> Polyclonal		<b>Reactivity:</b> Human, Mouse, Rat (predicted: Pig, Chicken, Horse)
<b>GeneID:</b> 1395	<b>SWISS:</b> Q13324	<b>Predicted MW.:</b> 43 kDa
<b>Target:</b> CRHR2		<b>Subcellular Location:</b> Cell membrane
<b>Immunogen:</b> KLH conjugated synthetic peptide derived from human CRHR2: 85-190/411. < Extracellular >		
<b>Purification:</b> affinity purified by Protein A		
<b>Concentration:</b> 1mg/ml		
<b>Storage:</b> 0.01M TBS (pH7.4) with 1% BSA, 0.02% Proclin300 and 50% Glycerol. Shipped at 4°C. Store at -20°C for one year. Avoid repeated freeze/thaw cycles.		
<b>Background:</b> The protein encoded by this gene belongs to the G-protein coupled receptor 2 family, and the subfamily of corticotropin releasing hormone receptor. This receptor shows high affinity for corticotropin releasing hormone (CRH), and also binds CRH-related peptides such as urocortin. CRH is synthesized in the hypothalamus, and plays an important role in coordinating the endocrine, autonomic, and behavioral responses to stress and immune challenge. Studies in mice suggest that this receptor maybe involved in mediating cardiovascular homeostasis. Alternatively spliced transcript variants encoding different isoforms have been described for this gene.[provided by RefSeq, Jan 2011]		

**— VALIDATION IMAGES —**

Sample: Lane 1: Heart (Mouse) Lysate at 40 ug  
Lane 2: Cerebrum (Mouse) Lysate at 40 ug Lane  
3: Cerebrum (Rat) Lysate at 40 ug Primary: Anti-  
CRHR2 (bs-6620R) at 1/300 dilution Secondary:  
IRDye800CW Goat Anti-Rabbit IgG at 1/20000  
dilution Predicted band size: 48-52 kD Observed  
band size: 48 kD