

PCDHA1 Rabbit pAb

Catalog Number: bs-11115R

Target Protein: PCDHA1

Concentration: 1mg/ml

Form: Liquid

Host: Rabbit

Clonality: Polyclonal

Isotype: IgG

Applications: IHC-P (1:100-500), IHC-F (1:100-500), IF (1:100-500)

Reactivity: Rat (predicted:Human, Mouse, Dog)

Predicted MW: 100 kDa

Entrez Gene: 56147

Swiss Prot: Q9Y5I3

Source: KLH conjugated synthetic peptide derived from human PCDHA1: 261-360/950.

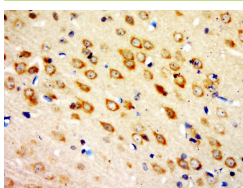
Purification: affinity purified by Protein A

Storage: 0.01M TBS (pH7.4) with 1% BSA, 0.02% Proclin300 and 50% Glycerol.

Shipped at 4°C. Store at -20°C for one year. Avoid repeated freeze/thaw cycles.

Background: Protocadherins are a large family of cadherin-like cell adhesion proteins that are involved in the establishment and maintenance of neuronal connections in the brain. There are three protocadherin gene clusters, designated alpha, beta and gamma, all of which contain multiple tandemly arranged genes. PCDHA1 (protocadherin alpha 1), also known as PCDH-ALPHA1, is a 950 amino acid, single-pass type I membrane protein that contains six cadherin domains. Functioning as a potential calcium-dependent cell-adhesion protein, PCDHA1 has been suspected to play a role in the creation and maintenance of neuronal connections. Three isoforms of PCDHA1 exists due to alternative splicing events.

VALIDATION IMAGES



Paraformaldehyde-fixed, paraffin embedded (rat brain); Antigen retrieval by boiling in sodium citrate buffer (pH6.0) for 15min; Block endogenous peroxidase by 3% hydrogen peroxide for 20 minutes; Blocking buffer (normal goat serum) at 37°C for 30min; Antibody incubation with (PCDHA1) Polyclonal Antibody, Unconjugated (bs-11115R) at 1:5000 overnight at 4°C, followed by a conjugated secondary (sp-0023) for 20 minutes and DAB staining.