
PCDH8 Rabbit pAb

Catalog Number: bs-11114R

Target Protein: PCDH8

Concentration: 1mg/ml

Form: Liquid

Host: Rabbit

Clonality: Polyclonal

Isotype: IgG

Applications: WB (1:500-2000)

Reactivity: Human (predicted: Mouse, Rat, Rabbit, Pig, Sheep, Cow, Goose, Chimpanzee)

Predicted MW: 110 kDa

Subcellular: Cell membrane

Locations:

Entrez Gene: 5100

Swiss Prot: O95206

Source: KLH conjugated synthetic peptide derived from human PCDH8: 51-150/1070.

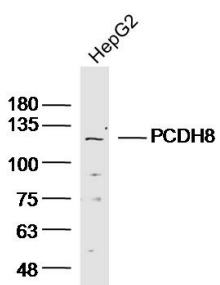
Purification: affinity purified by Protein A

Storage: 0.01M TBS (pH7.4) with 1% BSA, 0.02% Proclin300 and 50% Glycerol.

Shipped at 4°C. Store at -20°C for one year. Avoid repeated freeze/thaw cycles.

Background: Protocadherins are a large family of cadherin-like cell adhesion proteins that are involved in the establishment and maintenance of neuronal connections in the brain. There are three protocadherin gene clusters, designated alpha, beta and gamma, all of which contain multiple tandemly arranged genes. PCDH8 (protocadherin-8), also known as Arcadlin or PAPC, is a 1,070 amino acid single-pass type I membrane protein that contains six cadherin domains and belongs to the protocadherin family. Localized to the cell membrane and expressed specifically in fetal and adult brain, PCDH8 is thought to play a role in cell adhesion events in the central nervous system (CNS). PCDH8 is inactivated or silenced in breast cancer, suggesting a possible role in tumor suppression. Two isoforms of PCDH8 that differ in their cytoplasmic tails are expressed due to alternative splicing events.

VALIDATION IMAGES



Sample: HepG2 (Human) cell Lysate at 40 ug Primary: Anti-PCDH8(bs-11114R) at 1/300 dilution Secondary: IRDye800CW Goat Anti-Rabbit IgG at 1/20000 dilution Predicted band size: 110kD Observed band size: 110kD