

bs-7629R

[Primary Antibody]

MICS1 Rabbit pAb

Bioss
ANTIBODIES

www.bioss.com.cn

sales@bioss.com.cn

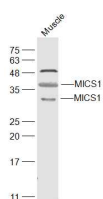
techsupport@bioss.com.cn

400-901-9800

— DATASHEET —

Host: Rabbit	Isotype: IgG	Applications: WB (1:500-2000)
Clonality: Polyclonal		Reactivity: Human, Mouse (predicted: Rat, Rabbit, Pig, Sheep, Cow, Zebrafish, Dog, Horse)
GeneID: 27069	SWISS: Q9H3K2	Predicted MW.: 32 kDa
Target: MICS1		Subcellular Location: Cell membrane ,Cytoplasm
Immunogen: KLH conjugated synthetic peptide derived from human MICS1: 230-330/345.		
Purification: affinity purified by Protein A		
Concentration: 1mg/ml		
Storage: 0.01M TBS (pH7.4) with 1% BSA, 0.02% Proclin300 and 50% Glycerol. Shipped at 4°C. Store at -20°C for one year. Avoid repeated freeze/thaw cycles.		
Background: Required for the mitochondrial tubular network and cristae organization. Involved in apoptotic release of cytochrome c.		

— VALIDATION IMAGES —



Sample: Muscle (Mouse) Lysate at 40 ug Primary:
Anti-MICS1 (bs-7629R) at 1/1000 dilution
Secondary: IRDye800CW Goat Anti-Rabbit IgG at
1/20000 dilution Predicted band size: 32 kD
Observed band size: 32/37 kD