

bs-7624R**[Primary Antibody]**

Cyclophilin F Rabbit pAb

BioSS
ANTIBODIES

www.bioss.com.cn

sales@bioss.com.cn

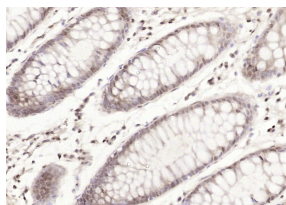
techsupport@bioss.com.cn

400-901-9800

— DATASHEET —

Host: Rabbit	Isotype: IgG	Applications: IHC-P (1:100-500) IHC-F (1:100-500) IF (1:100-500) Reactivity: Human, Rat (predicted: Mouse, Pig, Cow, Chicken) Predicted MW.: 22 kDa Subcellular Location: Cytoplasm
Clonality: Polyclonal		
GeneID: 10105	SWISS: P30405	
Target: Cyclophilin F		
Immunogen: KLH conjugated synthetic peptide derived from human Cyclophilin F: 31-130/207.		
Purification: affinity purified by Protein A		
Concentration: 1mg/ml		
Storage: 0.01M TBS (pH7.4) with 1% BSA, 0.02% Proclin300 and 50% Glycerol. Shipped at 4°C. Store at -20°C for one year. Avoid repeated freeze/thaw cycles.		
Background: The protein encoded by this gene is a member of the peptidyl-prolyl cis-trans isomerase (PPIase) family. PPIases catalyze the cis-trans isomerization of proline imidic peptide bonds in oligopeptides and accelerate the folding of proteins. This protein is part of the mitochondrial permeability transition pore in the inner mitochondrial membrane. Activation of this pore is thought to be involved in the induction of apoptotic and necrotic cell death.		

— VALIDATION IMAGES —



Paraformaldehyde-fixed, paraffin embedded (human colon carcinoma); Antigen retrieval by boiling in sodium citrate buffer (pH6.0) for 15min; Block endogenous peroxidase by 3% hydrogen peroxide for 20 minutes; Blocking buffer (normal goat serum) at 37°C for 30min; Antibody incubation with (Cyclophilin F) Polyclonal Antibody, Unconjugated (bs-7624R) at 1:200 overnight at 4°C, followed by operating according to SP Kit(Rabbit) (sp-0023) instructions and DAB staining.

— SELECTED CITATIONS —

- **[IF=8.44]** Li Yingxi. et al. Identification of novel immune subtypes and potential hub genes of patients with psoriasis. J TRANSL MED. 2023 Dec;21(1):1-12 IHC ;Human. 36890558