

bs-7630R**[Primary Antibody]****MTCH1 Rabbit pAb****BioSS**
ANTIBODIES

www.bioss.com.cn

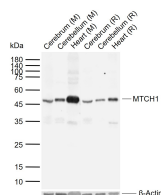
sales@bioss.com.cn

techsupport@bioss.com.cn

400-901-9800

— DATASHEET —

| | | |
|--|---|---|
| Host: Rabbit Clonality: Polyclonal GeneID: 23787 Target: MTCH1 Immunogen: KLH conjugated synthetic peptide derived from human MTCH1: 151-250/389. Purification: affinity purified by Protein A Concentration: 1mg/ml Storage: 0.01M TBS (pH7.4) with 1% BSA, 0.02% Proclin300 and 50% Glycerol. Shipped at 4°C. Store at -20°C for one year. Avoid repeated freeze/thaw cycles. Background: This gene encodes a member of the mitochondrial carrier family. The encoded protein is localized to the mitochondrion inner membrane and induces apoptosis independent of the proapoptotic proteins Bax and Bak. Pseudogenes on chromosomes 6 and 11 have been identified for this gene. Alternatively spliced transcript variants encoding multiple isoforms have been observed. [provided by RefSeq, Oct 2012] | Isotype: IgG SWISS: Q9NZJ7 | Applications: WB (1:500-2000) Reactivity: Mouse, Rat (predicted: Human, Pig, Dog, Horse) Predicted MW.: 42 kDa Subcellular Location: Cell membrane ,Cytoplasm |
|--|---|---|

— VALIDATION IMAGES —

Sample: Lane 1: Mouse Cerebrum tissue lysates
 Lane 2: Mouse Cerebellum tissue lysates Lane 3:
 Mouse Heart tissue lysates Lane 4: Rat Cerebrum
 tissue lysates Lane 5: Rat Cerebellum tissue
 lysates Lane 6: Rat Heart tissue lysates Primary:
 Anti-MTCH1 (bs-7630R) at 1/1000 dilution
 Secondary: IRDye800CW Goat Anti-Rabbit IgG at
 1/20000 dilution Predicted band size: 42 kDa
 Observed band size: 47 kDa