

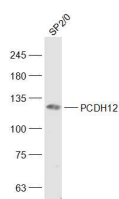
**bs-11109R****[ Primary Antibody ]****PCDH12 Rabbit pAb****BioSS**  
**ANTIBODIES**

www.bioss.com.cn

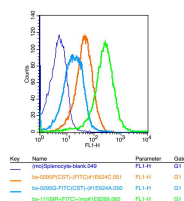
sales@bioss.com.cn

techsupport@bioss.com.cn

400-901-9800

**— DATASHEET —****Host:** Rabbit**Isotype:** IgG**Clonality:** Polyclonal**GeneID:** 51294**SWISS:** Q9NPG4**Target:** PCDH12**Immunogen:** KLH conjugated synthetic peptide derived from human PCDH12: 401-500/1184. < Extracellular >**Purification:** affinity purified by Protein A**Concentration:** 1mg/ml**Storage:** 0.01M TBS (pH7.4) with 1% BSA, 0.02% Proclin300 and 50% Glycerol.  
Shipped at 4°C. Store at -20°C for one year. Avoid repeated freeze/thaw cycles.**Background:** This gene belongs to the protocadherin gene family, a subfamily of the cadherin superfamily. The encoded protein consists of an extracellular domain containing 6 cadherin repeats, a transmembrane domain and a cytoplasmic tail that differs from those of the classical cadherins. The gene localizes to the region on chromosome 5 where the protocadherin gene clusters reside. The exon organization of this transcript is similar to that of the gene cluster transcripts, notably the first large exon, but no significant sequence homology exists. The function of this cellular adhesion protein is undetermined but mouse protocadherin 12 does not bind catenins and appears to have no effect on cell migration or growth.**Applications:** WB (1:500-2000)**Flow-Cyt** (1µg/Test)**Reactivity:** Mouse (predicted: Human, Rat, Sheep, Cow, Horse)**Predicted MW.:** 126 kDa**Subcellular Location:** Cell membrane**— VALIDATION IMAGES —**

Sample: SP2/0(Mouse) Cell Lysate at 30 ug  
 Primary: Anti-PCDH12 (bs-11109R) at 1/1000  
 dilution Secondary: IRDye800CW Goat Anti-Rabbit IgG at 1/20000 dilution Predicted band size: 126 kD Observed band size: 126 kD



Positive control: (mo)Splenocytes(2% Paraformaldehyde-fixed ) Isotype Control  
 Antibody: Rabbit IgG; Dilution: 1µg in 100 µl 1 X PBS containing 0.5% BSA Secondary Antibody: Goat anti-rabbit IgG-FITC; Dilution: 1:200 in 1 X PBS containing 0.5% BSA Primary Antibody : Rabbit Anti-CD28 antibody (bs-11109R); Dilution: 1µg in 100 µl 1X PBS containing 0.5% BSA