

**bs-5720R****[ Primary Antibody ]****GDF10 Rabbit pAb****BioSS**  
**ANTIBODIES**

www.bioss.com.cn

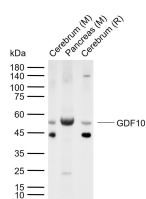
sales@bioss.com.cn

techsupport@bioss.com.cn

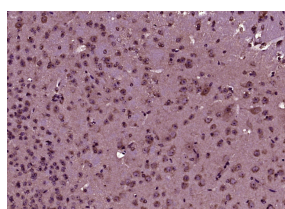
400-901-9800

**— DATASHEET —**

<b>Host:</b> Rabbit <b>Clonality:</b> Polyclonal <b>GeneID:</b> 2662 <b>Target:</b> GDF10 <b>Immunogen:</b> KLH conjugated synthetic peptide derived from human GDF10: 371-478/478. <b>Purification:</b> affinity purified by Protein A <b>Concentration:</b> 1mg/ml <b>Storage:</b> 0.01M TBS (pH7.4) with 1% BSA, 0.02% Proclin300 and 50% Glycerol. Shipped at 4°C. Store at -20°C for one year. Avoid repeated freeze/thaw cycles. <b>Background:</b> GDF10, or growth differentiation factor 10, bone morphogenetic protein (BMP) family and the TGF-beta superfamily. This group of proteins is characterized by a polybasic proteolytic processing site which is cleaved to produce a mature protein containing seven conserved cysteine residues. GDF10 is expressed in femur, brain, lung, skeletal muscle, pancreas and testis.	<b>Isotype:</b> IgG <b>SWISS:</b> P55107	<b>Applications:</b> <b>WB</b> (1:500-2000) <b>IHC-P</b> (1:100-500) <b>IHC-F</b> (1:100-500) <b>IF</b> (1:100-500)
		<b>Reactivity:</b> Mouse, Rat (predicted: Human, Pig, GuineaPig, Horse)
		<b>Predicted MW.:</b> 12/53 kDa
		<b>Subcellular Location:</b> Secreted

**— VALIDATION IMAGES —**

Sample: Lane 1: Mouse Cerebrium tissue lysates  
Lane 2: Mouse Pancreas tissue lysates Lane 3:  
Rat Cerebrium tissue lysates Primary: Anti-GDF10  
(bs-5720R) at 1/1000 dilution Secondary:  
IRDye800CW Goat Anti-Rabbit IgG at 1/20000  
dilution Predicted band size: 12 kDa Observed  
band size: 53 kDa



Paraformaldehyde-fixed, paraffin embedded  
(Mouse brain); Antigen retrieval by boiling in  
sodium citrate buffer (pH6.0) for 15min; Block  
endogenous peroxidase by 3% hydrogen  
peroxide for 20 minutes; Blocking buffer (normal  
goat serum) at 37°C for 30min; Antibody  
incubation with (GDF10) Polyclonal Antibody,  
Unconjugated (bs-5720R) at 1:400 overnight at  
4°C, followed by operating according to SP  
Kit(Rabbit) (sp-0023) instructions and DAB  
staining.

**— SELECTED CITATIONS —**

- **[IF=15.266]** Armaka, Marietta. et al. Single-cell multimodal analysis identifies common regulatory programs in synovial fibroblasts of rheumatoid arthritis patients and modeled TNF-driven arthritis. GENOME MED. 2022 Dec;14(1):1-25 IF ;Mouse. 35879783