

bs-13372R**[Primary Antibody]****BioSS**
ANTIBODIES

www.bioss.com.cn

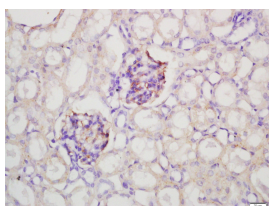
sales@bioss.com.cn

techsupport@bioss.com.cn

400-901-9800

GLEPP1 Rabbit pAb**— DATASHEET —**

Host: Rabbit	Isotype: IgG	Applications: IHC-P (1:100-500) IHC-F (1:100-500) IF (1:100-500) Reactivity: Rat (predicted: Human, Mouse, Dog, Horse) Predicted MW.: 135 kDa Subcellular Location: Cell membrane
Clonality: Polyclonal		
GeneID: 5800	SWISS: Q16827	
Target: GLEPP1		
Immunogen: KLH conjugated synthetic peptide derived from human GLEPP1: 351-450/1216. < Extracellular >		
Purification: affinity purified by Protein A		
Concentration: 1mg/ml		
Storage: 0.01M TBS (pH7.4) with 1% BSA, 0.02% Proclin300 and 50% Glycerol. Shipped at 4°C. Store at -20°C for one year. Avoid repeated freeze/thaw cycles.		
Background: Protein phosphatases play critical roles in the regulation of signal transduction pathways. The family can be separated into three general categories, which are distinguished on the basis of substrate specificity. The first and largest category, termed protein tyrosine phosphatases or PTPs, includes transmembrane proteins, membrane associated proteins and proteins that localize to nuclei. The second category of protein phosphatases dephosphorylate proteins on phosphoserine and phosphothreonine residues, whereas the third category of protein phosphatases exhibit dual specificities and can dephosphorylate proteins on phosphotyrosine and phosphoserine/phosphothreonine residues. Glomerular epithelial protein 1 (GLEPP1), also designated protein tyrosine phosphatase U2 (PTPase U2) or receptor-type tyrosine-protein phosphatase O (PTPRO), belongs to the protein-tyrosine phosphatase family. GLEPP1 is a Type I membrane protein containing 8 fibronectin type-III domains and 1 tyrosine-protein phosphatase domain. GLEPP1 is expressed primarily in the glomeruli of the kidney, but is also detected in placenta, lung and brain.		

— VALIDATION IMAGES —

Tissue/cell: rat lung carcinoma; 4%
Paraformaldehyde-fixed and paraffin-
embedded; Antigen retrieval: citrate buffer (
0.01M, pH 6.0), Boiling bathing for 15min; Block
endogenous peroxidase by 3% Hydrogen
peroxide for 30min; Blocking buffer (normal goat
serum, C-0005) at 37°C for 20 min; Incubation:
Anti-GGA2 Polyclonal Antibody,
Unconjugated(bs-13344R) 1:200, overnight at
4°C, followed by conjugation to the secondary
antibody(SP-0023) and DAB(C-0010) staining

— SELECTED CITATIONS —

Important Note: This product as supplied is intended for research use only, not for use in human, therapeutic or diagnostic applications.

- **[IF=3.9]** Astrid K Kardani. et al. Protective Effects of *Physalis angulata* on Podocythopathies Through B-Cell-Activating Factor Inhibition in Doxorubicin-Induced Nephrotic Syndrome Rat Model.. *Biomedicines*. 2025 Mar 14;13(3):719. IF ;Rat. 40149694