

**bs-13369R****[ Primary Antibody ]**

www.bioss.com.cn

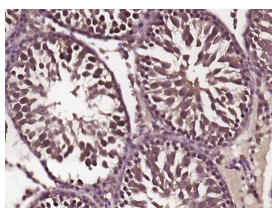
sales@bioss.com.cn

techsupport@bioss.com.cn

400-901-9800

**Beta galactosidase Rabbit pAb****— DATASHEET —**

|  |                      |   |
|--|----------------------|---|
| <b>Host:</b> Rabbit  | <b>Isotype:</b> IgG  | <b>Applications:</b> IHC-P (1:100-500)<br>IHC-F (1:100-500)<br>IF (1:100-500)<br><br><b>Reactivity:</b> Rat (predicted: Human, Mouse, Pig, Sheep, Cow, Chicken, Dog, Horse)<br><br><b>Predicted MW.:</b> 73 kDa<br><br><b>Subcellular Location:</b> Cytoplasm |
| <b>Clonality:</b> Polyclonal   |                      |   |
| <b>GeneID:</b> 2720  | <b>SWISS:</b> P16278 |   |
| <b>Target:</b> Beta galactosidase  |                      |   |
| <b>Immunogen:</b> KLH conjugated synthetic peptide derived from human Beta galactosidase: 301-400/677.   |                      |   |
| <b>Purification:</b> affinity purified by Protein A  |                      |   |
| <b>Concentration:</b> 1mg/ml   |                      |   |
| <b>Storage:</b> 0.01M TBS (pH7.4) with 1% BSA, 0.02% Proclin300 and 50% Glycerol.<br>Shipped at 4°C. Store at -20°C for one year. Avoid repeated freeze/thaw cycles.   |                      |   |
| <b>Background:</b> This gene encodes a member of the glycosyl hydrolase 35 family of proteins. Alternative splicing results in multiple transcript variants, at least one of which encodes a preproprotein that is proteolytically processed to generate the mature lysosomal enzyme. This enzyme catalyzes the hydrolysis of a terminal beta-linked galactose residue from ganglioside substrates and other glycoconjugates. Mutations in this gene may result in GM1-gangliosidosis and Morquio B syndrome. [provided by RefSeq, Nov 2015] |                      |   |

**— VALIDATION IMAGES —**

Paraformaldehyde-fixed, paraffin embedded (rat testis tissue); Antigen retrieval by boiling in sodium citrate buffer (pH6.0) for 15min; Block endogenous peroxidase by 3% hydrogen peroxide for 20 minutes; Blocking buffer (normal goat serum) at 37°C for 30min; Antibody incubation with (GLB1) Polyclonal Antibody, Unconjugated (bs-13369R) at 1:400 overnight at 4°C, followed by operating according to SP Kit(Rabbit) (sp-0023) instructions and DAB staining.