

bs-22287R**[Primary Antibody]****Aurora B Rabbit pAb****Bioss**
ANTIBODIES

www.bioss.com.cn

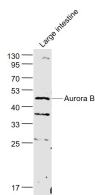
sales@bioss.com.cn

techsupport@bioss.com.cn

400-901-9800

— DATASHEET —

Host: Rabbit	Isotype: IgG	Applications: WB (1:500-2000)
Clonality: Polyclonal		Reactivity: Mouse (predicted: Human, Rat)
GeneID: 9212	SWISS: Q96GD4	
Target: Aurora B		Predicted MW.: 39 kDa
Immunogen: KLH conjugated synthetic peptide derived from human Aurora B : 271-344/344.		Subcellular Location: Cytoplasm ,Nucleus
Purification: affinity purified by Protein A		
Concentration: 1mg/ml		
Storage: 0.01M TBS (pH7.4) with 1% BSA, 0.02% Proclin300 and 50% Glycerol. Shipped at 4°C. Store at -20°C for one year. Avoid repeated freeze/thaw cycles.		
Background: This gene encodes a member of the aurora kinase subfamily of serine/threonine kinases. The genes encoding the other two members of this subfamily are located on chromosomes 19 and 20. These kinases participate in the regulation of segregation of chromosomes during mitosis and meiosis through association with microtubules. A pseudogene of this gene is located on chromosome 8. Multiple transcript variants encoding different isoforms have been found for this gene. [provided by RefSeq, Feb 2012].		

— VALIDATION IMAGES —

Sample: Large intestine (Mouse) Lysate at 40 ug
Primary: Anti- Aurora B (bs-22287R) at 1/1000
dilution Secondary: IRDye800CW Goat Anti-
Rabbit IgG at 1/20000 dilution Predicted band
size: 39 kD Observed band size: 48 kD

— SELECTED CITATIONS —

- **[IF=4.3]** Qinbing Xue. et al. Lycorine (Lycoris radiata)—a unique natural medicine on breast cancer. J CELL MOL MED. 2024 Aug;28(16):e70032 WB ;Human. 39175104