

bs-22338R**[Primary Antibody]****phospho-TFEB(Ser142) Rabbit pAb****Bioss**
ANTIBODIES

www.bioss.com.cn

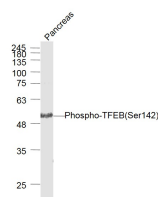
sales@bioss.com.cn

techsupport@bioss.com.cn

400-901-9800

— DATASHEET —

Host: Rabbit	Isotype: IgG	Applications: WB (1:500-2000)
Clonality: Polyclonal		IHC-P (1:100-500)
GeneID: 7942	SWISS: P19484	IHC-F (1:100-500)
Target: TFEB(Ser142)		IF (1:100-500)
Immunogen: KLH conjugated Synthesised phosphopeptide derived from human TFEB around the phosphorylation site of Ser142: PN(p-S)PM.		ICC/IF (1:100-500)
Purification: affinity purified by Protein A		Reactivity: Mouse (predicted: Human, Rat, Rabbit, Pig, Cow, Dog, Horse)
Concentration: 1mg/ml		Predicted MW.: 52 kDa
Storage: 0.01M TBS (pH7.4) with 1% BSA, 0.02% Proclin300 and 50% Glycerol. Shipped at 4°C. Store at -20°C for one year. Avoid repeated freeze/thaw cycles.		Subcellular Location: Cytoplasm ,Nucleus
Background: Transcription factors of the basic helix-loop-helix zipper (bHLH-ZIP) family contain a basic domain, used for DNA binding, and HLH and ZIP domains, both used for oligomerization. TFEB was isolated from a human B-cell cDNA library using a binding sequence from the adenovirus major late promoter. This transcription factor probably binds to the USF/MLTF site and probably recognizes E-box sequences in the heavy-chain immunoglobulin enhancer.		

— VALIDATION IMAGES —

Sample: Pancreas (Mouse) Lysate at 40 ug
Primary: Anti- Phospho-TFEB(Ser142)
(bs-22338R) at 1/1000 dilution Secondary:
IRDye800CW Goat Anti-Rabbit IgG at 1/20000
dilution Predicted band size: 52 kD Observed
band size: 52 kD