
ADRA2C Rabbit pAb

Catalog Number: bs-12040R

Target Protein: ADRA2C

Concentration: 1mg/ml

Form: Liquid

Host: Rabbit

Clonality: Polyclonal

Isotype: IgG

Applications: WB (1:500-2000), Flow-Cyt (1µg/Test)

Reactivity: Human (predicted:Mouse, Rat, Pig, Dog)

Predicted MW: 49 kDa

Entrez Gene: 152

Swiss Prot: P18825

Source: KLH conjugated synthetic peptide derived from human ADRA2C/alpha 2C Adrenergic Receptor: 21-120/462.

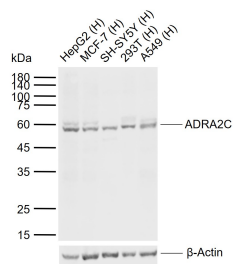
Purification: affinity purified by Protein A

Storage: 0.01M TBS (pH7.4) with 1% BSA, 0.02% Proclin300 and 50% Glycerol.

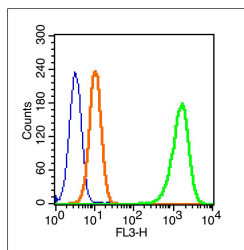
Shipped at 4°C. Store at -20°C for one year. Avoid repeated freeze/thaw cycles.

Background: Alpha-2-adrenergic receptors are members of the G protein-coupled receptor superfamily. They include 3 highly homologous subtypes: alpha2A, alpha2B, and alpha2C. These receptors have a critical role in regulating neurotransmitter release from sympathetic nerves and from adrenergic neurons in the central nervous system. The mouse studies revealed that both the alpha2A and alpha2C subtypes were required for normal presynaptic control of transmitter release from sympathetic nerves in the heart and from central noradrenergic neurons. The alpha2A subtype inhibited transmitter release at high stimulation frequencies, whereas the alpha2C subtype modulated neurotransmission at lower levels of nerve activity. This gene encodes the alpha2C subtype, which contains no introns in either its coding or untranslated sequences. [provided by RefSeq, Jul 2008]

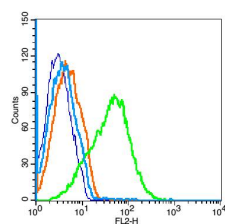
VALIDATION IMAGES



Sample: Lane 1: Human HepG2 cell lysates Lane 2: Human MCF-7 cell lysates Lane 3: Human SH-SY5Y cell lysate Lane 4: Human 293T cell lysates Lane 5: Human A549 cell lysates Primary: Anti-ADRA2C (bs-12040R) at 1/1000 dilution Secondary: IRDye800CW Goat Anti-Rabbit IgG at 1/20000 dilution Predicted band size: 49 kDa Observed band size: 58 kDa



Blank control (blue line): A431(fixed with 70% ice-cold methanol overnight at 4°C). Primary Antibody (green line): Rabbit Anti-ADRA2C/PE-CY5 Conjugated antibody (bs-12040R-PE-CY5) ,Dilution: 1 μ g /10⁶ cells; Isotype Control Antibody (orange line): Rabbit IgG-PE-CY5 .



Blank control(blue):U937 (fixed with 2% paraformaldehyde (10 min)). Primary Antibody:Rabbit Anti- ADRA2C antibody(bs-12040R), Dilution: 1 μ g in 100 μ L 1X PBS containing 0.5% BSA; Isotype Control Antibody: Rabbit IgG(orange) ,used under the same conditions); Secondary Antibody: Goat anti-rabbit IgG-PE(white blue), Dilution: 1:200 in 1 X PBS containing 0.5% BSA.