

**bs-12029R****[ Primary Antibody ]****GPRC5B Rabbit pAb**

**BioSS**  
ANTIBODIES

www.bioss.com.cn

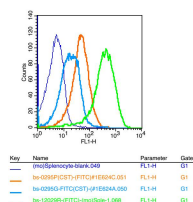
sales@bioss.com.cn

techsupport@bioss.com.cn

400-901-9800

**DATASHEET**

<b>Host:</b> Rabbit <b>Clonality:</b> Polyclonal <b>GeneID:</b> 51704 <b>Target:</b> GPRC5B <b>Immunogen:</b> KLH conjugated synthetic peptide derived from human G protein coupled receptor family C group 1 member B: 1-100/403. < Extracellular > <b>Purification:</b> affinity purified by Protein A <b>Concentration:</b> 1mg/ml <b>Storage:</b> 0.01M TBS (pH7.4) with 1% BSA, 0.02% Proclin300 and 50% Glycerol. Shipped at 4°C. Store at -20°C for one year. Avoid repeated freeze/thaw cycles. <b>Background:</b> GPRC5B (G protein-coupled receptor family C group 5 member B, retinoic acid-induced gene 2 protein) is a 403 amino acid protein encoded by the human GPRC5B gene. GPRC5B is an orphan receptor member of the G protein-coupled receptor 3 family. G protein-coupled receptors (GPCRs or GPRs) contain 7 transmembrane domains and transduce extracellular signals through heterotrimeric G proteins. Key roles for G protein-coupled receptors include control of protein maturation and cell surface delivery, and providing the correct framework for interactions with both heterotrimeric G proteins and arrestins to allow signal generation and termination. This retinoic acid-inducible G protein-coupled receptor provides evidence for a possible interaction between retinoid and G protein signaling pathways. GPRC5B is highly expressed in kidney, pancreas and testis, and has moderate expression in brain, heart, prostate, small intestine and spleen.	<b>Isotype:</b> IgG <b>SWISS:</b> Q9NZH0 <b>Applications:</b> Flow-Cyt (1µg/Test) <b>Reactivity:</b> Mouse (predicted: Human, Rat, Rabbit, Pig, Sheep, Cow, Dog, Horse) <b>Predicted MW.:</b> 42 kDa <b>Subcellular Location:</b> Cell membrane ,Cytoplasm
--	---

**VALIDATION IMAGES**

Positive control: (mo)Splenocytes(2%

Paraformaldehyde-fixed ) Isotype Control

Antibody: Rabbit IgG; Dilution: 1µg in 100 µl 1 X

PBS containing 0.5% BSA Secondary Antibody:

Goat anti-rabbit IgG-FITC; Dilution: 1:200 in 1 X

PBS containing 0.5% BSA Primary Antibody:

rabbit Anti-GPRC5B (bs-12029R); Dilution: 1µg in

100 µl 1X PBS containing 0.5% BSA