

### [ Primary Antibody ]



www.bioss.com.cn

sales@bioass.com.cn

techsupport@bioss.com.cn

400-901-9800

## — DATASHEET

**Host:** Rabbit

**Isotype:** IgG

**Clonality:** Polyclonal

**GeneID:** 1272

**SWISS:** Q12860

**Target:** Contactin 1

**Immunogen:** KLH conjugated synthetic peptide derived from human Contactin 1: 151-250/1018.

**Purification:** affinity purified by Protein A

**Concentration:** 1mg/ml

**Storage:** 0.01M TBS (pH7.4) with 1% BSA, 0.02% Proclin300 and 50% Glycerol.

Shipped at 4°C. Store at -20°C for one year. Avoid repeated freeze/thaw cycles.

**Background:** The protein encoded by this gene is a member of the immunoglobulin superfamily. It is a glycosylphosphatidylinositol (GPI)-anchored neuronal membrane protein that functions as a cell adhesion molecule. It may play a role in the formation of axon connections in the developing nervous system. Multiple alternatively spliced transcript variants encoding different isoforms have been found for this gene. [provided by RefSeq, Dec 2011]

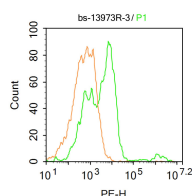
**Applications: Flow-Cyt** (3ug/test)

**Reactivity:** Mouse (predicted: Human, Rat, Pig, Sheep, Cow, Chicken, Dog, Horse)

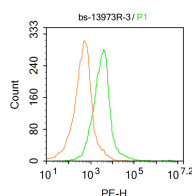
**Predicted**  
**MW.:** 111 kDa

**Subcellular Location:** Extracellular matrix ,Cell membrane

— VALIDATION IMAGES



Blank control: Mouse kidney. Primary Antibody (green line): Rabbit Anti-Contactin 1 antibody (bs-13973R) Dilution:  $3\mu\text{g}/10^6$  cells; Isotype Control Antibody (orange line): Rabbit IgG . Secondary Antibody : Goat anti-rabbit IgG-PE Dilution:  $1\mu\text{g}/\text{test}$ . Protocol The cells were incubated in 5%BSA to block non-specific protein-protein interactions for 30 min at room temperature .Cells stained with Primary Antibody for 30 min at room temperature. The secondary antibody used for 40 min at room temperature. Acquisition of 20,000 events was performed.



Blank control: Mouse brain. Primary Antibody (green line): Rabbit Anti-Contactin 1 antibody (bs-13973R) Dilution:  $3\mu\text{g}/10^6$  cells; Isotype Control Antibody (orange line): Rabbit IgG . Secondary Antibody : Goat anti-rabbit IgG-PE Dilution:  $1\mu\text{g}/\text{test}$ . Protocol The cells were incubated in 5%BSA to block non-specific protein-protein interactions for 30 min at room temperature .Cells stained with Primary Antibody for 30 min at room temperature. The secondary antibody used for 40 min at room temperature. Acquisition of 20,000 events was performed.