
HAVCR2/TIM-3 Rabbit pAb

Catalog Number: bs-7363R

Target Protein: HAVCR2/TIM-3

Concentration: 1mg/ml

Form: Liquid

Host: Rabbit

Clonality: Polyclonal

Isotype: IgG

Applications: WB (1:500-2000), ELISA (1:5000-10000)

Reactivity: Human, Mouse

Predicted MW: 31 kDa

Detected MW: 40 kDa

Entrez Gene: 84868

Swiss Prot: Q8TDQ0

Source: KLH conjugated synthetic peptide derived from human TIM 3: 101-200/301.

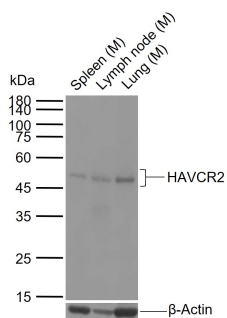
Purification: affinity purified by Protein A

Storage: 0.01M TBS (pH7.4) with 1% BSA, 0.02% Proclin300 and 50% Glycerol.

Shipped at 4°C. Store at -20°C for one year. Avoid repeated freeze/thaw cycles.

Background: The protein encoded by this gene belongs to the immunoglobulin superfamily, and TIM family of proteins. CD4-positive T helper lymphocytes can be divided into types 1 (Th1) and 2 (Th2) on the basis of their cytokine secretion patterns. Th1 cells are involved in cell-mediated immunity to intracellular pathogens and delayed-type hypersensitivity reactions, whereas, Th2 cells are involved in the control of extracellular helminthic infections and the promotion of atopic and allergic diseases. This protein is a Th1-specific cell surface protein that regulates macrophage activation, and inhibits Th1-mediated auto- and alloimmune responses, and promotes immunological tolerance. [provided by RefSeq, Sep 2011]

VALIDATION IMAGES



25 ug total protein per lane of various lysates (see on figure) probed with HAVCR2 polyclonal antibody, unconjugated (bs-7363R) at 1:1000 dilution and 4°C overnight incubation. Followed by conjugated secondary antibody incubation at r.t. for 60 min.

PRODUCT SPECIFIC PUBLICATIONS

[IF=5.6] Meiying Song. et al. Pathogenic Th17 cell-mediated liver fibrosis contributes to resistance to PD-L1 antibody immunotherapy in hepatocellular carcinoma. INT IMMUNOPHARMACOL. 2024 Mar;129:111601 IHC ; Mouse . 38350354

[IF=3.943] Jie Hou. et al. Increased Tim-3+ monocytes/macrophages are associated with disease severity in patients with IgA nephropathy. Int Immunopharmacol. 2021 Aug;97:107666 IF ; Human . 34058623

[IF=3.118] Qu S et al. The effects of resiquimod in an ovalbumin-induced allergic rhinitis model.Int Immunopharmacol. 2018 Jun;59:233-242. IF ; Mouse . 29665497

[IF=3.223] Shifa Zhang. et al. Impact of the combination of sintilimab and chemotherapy on the tumor and paratumor PD-L1, IDO, TIM-3, FOXP3+ and CD8 expressions in patients with advanced esophageal squamous cell carcinoma. THORAC CANCER. 2022 Oct;; IHC ; Human . 36288460

[IF=2.1] Hui Zhao. et al. Expression of Tim-3/Galectin-9 pathway and CD8+T cells and related factors in patients with cystic echinococcosis. EXP PARASITOL. 2023 Nov;254:108623 IHC ; Human . 37793539