

bs-18646R**[Primary Antibody]****BioSS**
ANTIBODIES

www.bioss.com.cn

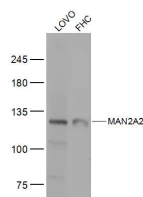
sales@bioss.com.cn

techsupport@bioss.com.cn

400-901-9800

MAN2A2 Rabbit pAb**— DATASHEET —**

Host: Rabbit	Isotype: IgG	Applications: WB (1:500-2000)
Clonality: Polyclonal		
GeneID: 4122	SWISS: P49641	
Target: MAN2A2		
Immunogen: KLH conjugated synthetic peptide derived from human MAN2A2: 1-100/1150.		
Purification: affinity purified by Protein A		Reactivity: Human (predicted: Mouse, Rat, Pig, Sheep, Cow, Dog, Horse)
Concentration: 1mg/ml		Predicted MW.: 131 kDa
Storage: 0.01M TBS (pH7.4) with 1% BSA, 0.02% Proclin300 and 50% Glycerol. Shipped at 4°C. Store at -20°C for one year. Avoid repeated freeze/thaw cycles.		Subcellular Location: Cytoplasm
Background: MAN2A2 is a single-pass type II membrane protein that localizes to the cisternae of the golgi and is involved in protein modification pathways. More specifically, MAN2A1 uses zinc as a cofactor to catalyze the first committed step in the formation of N-glycans, namely the hydrolysis of the terminal alpha-D-mannose residues in the oligosaccharide Man5(GlcNAc)3.		

— VALIDATION IMAGES —

Sample: LOVO(Human) Cell Lysate at 30 ug
FHC(Human) Cell Lysate at 30 ug Primary: Anti-MAN2A2 (bs-18646R) at 1/300 dilution
Secondary: IRDye800CW Goat Anti-Rabbit IgG at 1/20000 dilution Predicted band size: 131 kD
Observed band size: 131 kD