

bs-1598R**[Primary Antibody]****Cathepsin G Rabbit pAb****BioSS**
ANTIBODIES

www.bioss.com.cn

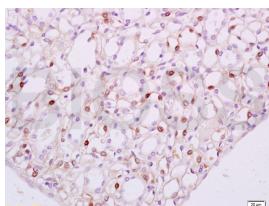
sales@bioss.com.cn

techsupport@bioss.com.cn

400-901-9800

— DATASHEET —

Host: Rabbit	Isotype: IgG	Applications: IHC-P (1:100-500) IHC-F (1:100-500) IF (1:100-500) Reactivity: Human, Rat (predicted: Mouse, Rabbit, Sheep, Cow, Dog, Horse) Predicted MW.: 28 kDa Subcellular Location: Cell membrane ,Nucleus
Clonality: Polyclonal		
GeneID: 1511	SWISS: P08311	
Target: Cathepsin G		
Immunogen: KLH conjugated synthetic peptide derived from human CTSG: 41-120/255.		
Purification: affinity purified by Protein A		
Concentration: 1mg/ml		
Storage: 0.01M TBS (pH7.4) with 1% BSA, 0.02% Proclin300 and 50% Glycerol. Shipped at 4°C. Store at -20°C for one year. Avoid repeated freeze/thaw cycles.		
Background: Cathepsin G is a serine protease, it consisting of a single polypeptide with a molecular weight of 30 kDa as determined by SDS-PAGE. Its substrates are collagen and proteoglycans. Poor regulation of Cathepsin G levels has been associated with various connective tissue disorders, for example pulmonary emphysema and cystic fibrosis.		

— VALIDATION IMAGES —

Tissue/cell: rat kidney tissue; 4%
Paraformaldehyde-fixed and paraffin-
embedded; Antigen retrieval: citrate buffer (
0.01M, pH 6.0), Boiling bathing for 15min; Block
endogenous peroxidase by 3% Hydrogen
peroxide for 30min; Blocking buffer (normal goat
serum,C-0005) at 37°C for 20 min; Incubation:
Anti-Cathepsin G Polyclonal Antibody,
Unconjugated(bs-1598R) 1:100, overnight at 4°C,
followed by conjugation to the secondary
antibody(SP-0023) and DAB(C-0010) staining