

## Syntaxin 1A(brain) Rabbit pAb

Catalog Number: bs-1486R

Target Protein: Syntaxin 1A(brain)

Concentration: 1mg/ml

Form: Liquid

Host: Rabbit

Clonality: Polyclonal

Isotype: IgG

Applications: IHC-P (1:100-500), IHC-F (1:100-500), IF (1:100-500)

Reactivity: Human (predicted:Mouse, Rat, Rabbit, Pig, Sheep, Cow, Chicken, Dog, Horse)

Predicted MW: 33 kDa

Subcellular: Cell membrane

Locations:

Entrez Gene: 6804

Swiss Prot: Q16623

Source: KLH conjugated synthetic peptide derived from human Syntaxin 1A: 185-288/288.

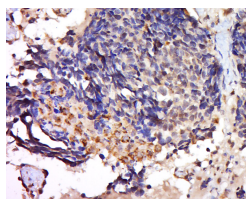
Purification: affinity purified by Protein A

Storage: 0.01M TBS (pH7.4) with 1% BSA, 0.02% Proclin300 and 50% Glycerol.

Shipped at 4°C. Store at -20°C for one year. Avoid repeated freeze/thaw cycles.

**Background:** Syntaxin 1a is potentially involved in docking of synaptic vesicles at presynaptic active zones and may play a critical role in neurotransmitter exocytosis. Haploinsufficiency of STX1A may be the cause of certain cardiovascular and musculo skeletal abnormalities observed in Williams-Beuren syndrome (WBS), a rare developmental disorder.

### VALIDATION IMAGES



Tissue/cell: human lung carcinoma; 4% Paraformaldehyde-fixed and paraffin-embedded; Antigen retrieval: citrate buffer ( 0.01M, pH 6.0 ), Boiling bathing for 15min; Block endogenous peroxidase by 3% Hydrogen peroxide for 30min; Blocking buffer (normal goat serum,C-0005) at 37°C for 20 min; Incubation: Anti-Syntaxin 1A(brain) Polyclonal Antibody, Unconjugated(bs-1486R) 1:600, overnight at 4°C, followed by conjugation to the secondary antibody(SP-0023) and DAB(C-0010) staining