

bs-2019R**[Primary Antibody]****phospho-KLF5 (Ser272) Rabbit pAb****Bioss**
ANTIBODIES

www.bioss.com.cn

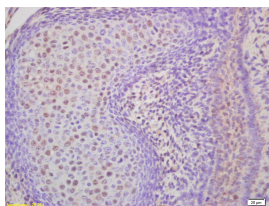
sales@bioss.com.cn

techsupport@bioss.com.cn

400-901-9800

— DATASHEET —

Host: Rabbit	Isotype: IgG	Applications: IHC-P (1:100-500)
Clonality: Polyclonal		IHC-F (1:100-500)
GeneID: 688	SWISS: Q13887	IF (1:100-500)
Target: KLF5 (Ser272)		Reactivity: Mouse (predicted: Human, Rat, Rabbit, Pig, Cow, Chicken, Dog, Horse)
Immunogen: KLH conjugated synthesised phosphopeptide derived from human KLF5 around the phosphorylation site of Ser272: PP(p-S)PP.		
Purification: affinity purified by Protein A		Predicted MW.: 50 kDa
Concentration: 1mg/ml		Subcellular Location: Nucleus
Storage: 0.01M TBS (pH7.4) with 1% BSA, 0.02% Proclin300 and 50% Glycerol. Shipped at 4°C. Store at -20°C for one year. Avoid repeated freeze/thaw cycles.		
Background: This gene encodes a member of the Kruppel-like factor subfamily of zinc finger proteins. Since the protein localizes to the nucleus and binds the epidermal growth factor response element, it is thought to be a transcription factor. [provided by RefSeq, Jul 2008]		

— VALIDATION IMAGES —

Tissue/cell: Mouse embryos; 4% Paraformaldehyde-fixed and paraffin-embedded; Antigen retrieval: citrate buffer (0.01M, pH 6.0), Boiling bathing for 15min; Block endogenous peroxidase by 3% Hydrogen peroxide for 30min; Blocking buffer (normal goat serum, C-0005) at 37°C for 20 min; Incubation: Anti-phospho-KLF5(Ser272) Polyclonal Antibody, Unconjugated(bs-2019R) 1:200, overnight at 4°C, followed by conjugation to the secondary antibody(SP-0023) and DAB(C-0010) staining