

**bs-10940R****[ Primary Antibody ]****phospho-Ephrin B2 (Tyr311/316) Rabbit pAb****BioSS**  
ANTIBODIES

www.bioss.com.cn

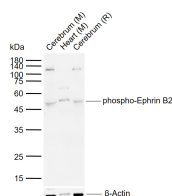
sales@bioss.com.cn

techsupport@bioss.com.cn

400-901-9800

**— DATASHEET —**

<b>Host:</b> Rabbit	<b>Isotype:</b> IgG	<b>Applications:</b> WB (1:500-2000)
<b>Clonality:</b> Polyclonal		<b>Reactivity:</b> Mouse, Rat (predicted: Human, Rabbit, Pig, Cow, Chicken, Dog, Horse)
<b>GeneID:</b> 1948	<b>SWISS:</b> P52799	<b>Predicted MW.:</b> 36 kDa
<b>Target:</b> Ephrin B2 (Tyr311/316)		<b>Subcellular Location:</b> Cell membrane
<b>Immunogen:</b> KLH conjugated Synthesised phosphopeptide derived from human Ephrin B2 around the phosphorylation site of Tyr311/316: GD(p-Y)GHPV(p-Y)IV.		
<b>Purification:</b> affinity purified by Protein A		
<b>Concentration:</b> 1mg/ml		
<b>Storage:</b> 0.01M TBS (pH7.4) with 1% BSA, 0.02% Proclin300 and 50% Glycerol. Shipped at 4°C. Store at -20°C for one year. Avoid repeated freeze/thaw cycles.		
<b>Background:</b> This gene encodes a member of the ephrin (EPH) family. The ephrins and EPH-related receptors comprise the largest subfamily of receptor protein-tyrosine kinases and have been implicated in mediating developmental events, especially in the nervous system and in erythropoiesis. Based on their structures and sequence relationships, ephrins are divided into the ephrin-A (EFNA) class, which are anchored to the membrane by a glycosylphosphatidylinositol linkage, and the ephrin-B (EFNB) class, which are transmembrane proteins. This gene encodes an EFNB class ephrin which binds to the EPHB4 and EPHA3 receptors. [provided by RefSeq, Jul 2008]		

**— VALIDATION IMAGES —**

Sample: Lane 1: Mouse Cerebrum tissue lysates  
Lane 2: Mouse Heart tissue lysates Lane 3: Rat  
Cerebrum tissue lysates Primary: Anti-phospho-  
Ephrin B2 (Tyr311/316) (bs-10940R) at 1/500  
dilution Secondary: IRDye800CW Goat Anti-  
Rabbit IgG at 1/20000 dilution Predicted band  
size: 36 kDa Observed band size: 50 kDa