

bs-7542R**[Primary Antibody]****Serine carboxypeptidase 1 Rabbit pAb****BioSS**
ANTIBODIES

www.bioss.com.cn

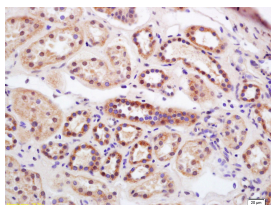
sales@bioss.com.cn

techsupport@bioss.com.cn

400-901-9800

— DATASHEET —

Host: Rabbit	Isotype: IgG	Applications: IHC-P (1:100-500) IHC-F (1:100-500) IF (1:100-500) Reactivity: Human (predicted: Mouse, Rat) Predicted MW.: 48 kDa Subcellular Location: Secreted ,Cytoplasm
Clonality: Polyclonal		
GeneID: 59342	SWISS: Q9HB40	
Target: Serine carboxypeptidase 1		
Immunogen: KLH conjugated synthetic peptide derived from human RISC/Serine carboxypeptidase 1: 121-320/452.		
Purification: affinity purified by Protein A		
Concentration: 1mg/ml		
Storage: 0.01M TBS (pH7.4) with 1% BSA, 0.02% Proclin300 and 50% Glycerol. Shipped at 4°C. Store at -20°C for one year. Avoid repeated freeze/thaw cycles.		
Background: Vascular smooth muscle activation is a salient feature of several pathological conditions including atherosclerosis, hypertension, vein graft failure, restenosis, and transplant arteriopathy. Several new genes whose proteins could lead to such biological effects have been identified. One such protein is RISC. Tissue expression pattern of Retinoid-inducible serine carboxypeptidase (RISC) in human revealed that it was highly expressed in kidney and heart.		

— VALIDATION IMAGES —

Tissue/cell: Human kidney; 4% Paraformaldehyde-fixed and paraffin-embedded; Antigen retrieval: citrate buffer (0.01M, pH 6.0), Boiling bathing for 15min; Block endogenous peroxidase by 3% Hydrogen peroxide for 30min; Blocking buffer (normal goat serum, C-0005) at 37°C for 20 min; Incubation: Anti-RISC/Serine carboxypeptidase 1 Polyclonal Antibody, Unconjugated(bs-7542R) 1:200, overnight at 4°C, followed by conjugation to the secondary antibody(SP-0023) and DAB(C-0010) staining