

**bs-7582R****[ Primary Antibody ]****BCL2L15 Rabbit pAb****Bioss**  
**ANTIBODIES**

www.bioss.com.cn

sales@bioss.com.cn

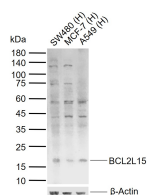
techsupport@bioss.com.cn

400-901-9800

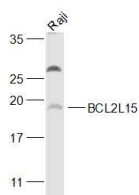
**DATASHEET****Host:** Rabbit**Isotype:** IgG**Clonality:** Polyclonal**GeneID:** 440603**SWISS:** Q5TBC7**Target:** BCL2L15**Immunogen:** KLH conjugated synthetic peptide derived from human BCL2L15: 65-163/163.**Purification:** affinity purified by Protein A**Concentration:** 1mg/ml**Storage:** 0.01M TBS (pH7.4) with 1% BSA, 0.02% Proclin300 and 50% Glycerol.

Shipped at 4°C. Store at -20°C for one year. Avoid repeated freeze/thaw cycles.

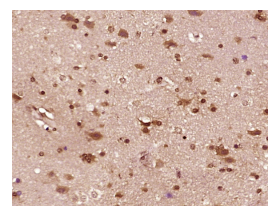
**Background:** BCL2L15 is a 163 amino acid protein and novel member of the Bcl-2 family that contains both BH2 and BH3 regions, but not BH1, BH4 or a C-terminal hydrophobic membrane anchor. Like Bcl-GL, Bfk does not bind to any Bcl-2 family members, even though its BH3 motif can mediate association with prosurvival proteins. Bfk localizes to cytoplasm, but unlike Bcl-GL, Bfk does not associate with organelles. Existing as four alternatively spliced isoforms, the pro-apoptotic isoforms of Bfk may help to protect against the development of human gastrointestinal malignancy. Bfk is found at low levels in stomach, ovary, bone marrow and spleen, but Bfk is highly expressed in mammary gland during pregnancy, suggesting that Bfk may play a role in mammary development. Bfk appears to be a cytosolic protein whose gene maps to chromosome 1p13.2. Chromosome 1 is the largest human chromosome spanning about 260 million base pairs and making up 8% of the human genome.

**Applications:** WB (1:200-1000)**IHC-P** (1:100-500)**IHC-F** (1:100-500)**IF** (1:100-500)**Reactivity:** Human (predicted: Mouse, Rat, Rabbit, Sheep, Cow, Dog, Horse)**Predicted MW.:** 18 kDa**Subcellular Location:** Cytoplasm ,Nucleus**VALIDATION IMAGES**

Sample: Lane 1: Human SW480 cell lysates  
 Lane 2: Human MCF-7 cell lysates  
 Lane 3: Human A549 cell lysates  
 Primary: Anti-BCL2L15 (bs-7582R) at 1/200 dilution  
 Secondary: IRDye800CW Goat Anti-Rabbit IgG at 1/20000 dilution  
 Predicted band size: 18kDa  
 Observed band size: 18 kDa



Sample: Raji(Human) Cell Lysate at 30 ug  
 Primary: Anti-BCL2L15 (bs-7582R) at 1/1000 dilution  
 Secondary: IRDye800CW Goat Anti-Rabbit IgG at 1/20000 dilution  
 Predicted band size: 18 kD  
 Observed band size: 19kD



Paraformaldehyde-fixed, paraffin embedded (human brain glioma); Antigen retrieval by boiling in sodium citrate buffer (pH6.0) for 15min; Block endogenous peroxidase by 3% hydrogen peroxide for 20 minutes; Blocking buffer (normal goat serum) at 37°C for 30min; Antibody incubation with (BCL2L15) Polyclonal Antibody, Unconjugated (bs-7582R) at 1:400 overnight at 4°C, followed by operating according to SP Kit(Rabbit) (sp-0023) instructions and DAB staining.

**SELECTED CITATIONS**

- **[IF=3.759]** Diqi Yanget al. BCL2L15 Depletion Inhibits Endometrial Receptivity via the STAT1 Signaling Pathway. Genes (Basel) . 2020 Jul 17;11(7):816. WB,IF ;Goat. 32708974

Important Note: This product as supplied is intended for research use only, not for use in human, therapeutic or diagnostic applications.