
Islet 1 Rabbit pAb

Catalog Number: bs-7532R

Target Protein: Islet 1

Concentration: 1mg/ml

Form: Liquid

Host: Rabbit

Clonality: Polyclonal

Isotype: IgG

Applications: WB (1:500-2000)

Reactivity: Human (predicted:Mouse, Rat, Sheep, Chicken, Horse)

Predicted MW: 39 kDa

Entrez Gene: 3670

Swiss Prot: P61371

Source: KLH conjugated synthetic peptide derived from human Islet 1: 201-300/349.

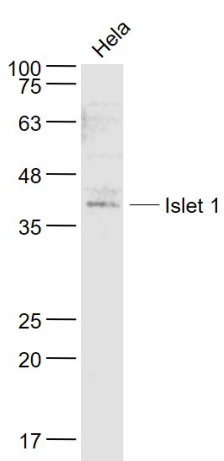
Purification: affinity purified by Protein A

Storage: 0.01M TBS (pH7.4) with 1% BSA, 0.02% Proclin300 and 50% Glycerol.

Shipped at 4°C. Store at -20°C for one year. Avoid repeated freeze/thaw cycles.

Background: Islet-1 and Islet-2 contain amino-terminal LIM domains and a carboxy-terminal homeodomain and both influence developmental events. Islet-1 influences embryogenesis of the pancreatic islets of Langerhans and neural tube motor neuron differentiation. In developing mouse teeth, Islet-1 mediates patterning of dentition as an activator of Bmp4 expression in incisor (distal) areas of the stomatodeal epithelium. Islet-1 expression defines cardiac progenitor cell populations and is required for normal cardiac development and asymmetry. Islet-2 activity in newly generated motor neurons permits the diversification of visceral and somatic motor neuron subtypes in the developing spinal cord. Murine Islet-2 specifies retinal ganglion cell (RGC) laterality by repressing an ipsilateral pathfinding program unique to the ventral-temporal crescent (VTC) of RGCs in a Zic2- and EphB1-dependent manner.

VALIDATION IMAGES



Sample: HeLa(Human) Cell Lysate at 30 ug Primary: Anti- Islet 1 (bs-7532R) at 1/1000 dilution Secondary: IRDye800CW Goat Anti-Rabbit IgG at 1/20000 dilution Predicted band size: 39 kD Observed band size: 39 kD