

## Insulin Receptor R Rabbit pAb

Catalog Number: bs-7531R

Target Protein: Insulin Receptor R

Concentration: 1mg/ml

Form: Liquid

Host: Rabbit

Clonality: Polyclonal

Isotype: IgG

Applications: IHC-P (1:100-500), IHC-F (1:100-500), IF (1:100-500)

Reactivity: Human (predicted:Mouse, Rat, Rabbit, Pig, Cow, Dog)

Predicted MW: 129 kDa

Entrez Gene: 3645

Swiss Prot: P14616

Source: KLH conjugated synthetic peptide derived from human Insulin receptor-related protein beta chain: 801-900/1297.

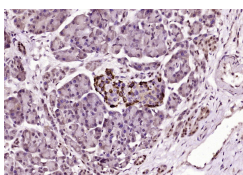
Purification: affinity purified by Protein A

Storage: 0.01M TBS (pH7.4) with 1% BSA, 0.02% Proclin300 and 50% Glycerol.

Shipped at 4°C. Store at -20°C for one year. Avoid repeated freeze/thaw cycles.

**Background:** The insulin receptor related receptor (IRR) is a heterotetrameric transmembrane receptor composed of two alpha and 2 beta chains linked by disulfide bonds. The alpha chains contribute to the formation of the ligand-binding domain, while the beta chains carry the kinase domain. Member of the insulin RTK family, IRR shares high homology with the insulin (IR) and the insulin-like growth factor-1 receptor (IGF-1R), but doesn't bind any of IR and IGF-1R known ligands. In contrast to the widespread patterns of expression to IR and IGF-1R, IRR demonstrates a very restricted cellular distribution in a subset of tissues of neuronal origin and its biological functions are still unknown.

### VALIDATION IMAGES



Paraformaldehyde-fixed, paraffin embedded (Human pancreatic cancer); Antigen retrieval by boiling in sodium citrate buffer (pH6.0) for 15min; Block endogenous peroxidase by 3% hydrogen peroxide for 20 minutes; Blocking buffer (normal goat serum) at 37°C for 30min; Antibody incubation with (Insulin Receptor R) Polyclonal Antibody, Unconjugated (bs-7531R) at 1:400 overnight at 4°C, followed by operating according to SP Kit(Rabbit) (sp-0023) instructions and DAB staining.