

alpha + beta Synuclein Rabbit pAb

Catalog Number: bs-11787R

Target Protein: alpha + beta Synuclein

Concentration: 1mg/ml

Form: Liquid

Host: Rabbit

Clonality: Polyclonal

Isotype: IgG

Applications: Flow-Cyt (1ug/Test), ICC/IF (1:50-200)

Reactivity: Human

Predicted MW: 14 kDa

Entrez Gene: 6622

Swiss Prot: P37840

Source: KLH conjugated synthetic peptide derived from human alpha + beta Synuclein: 32-44/140.

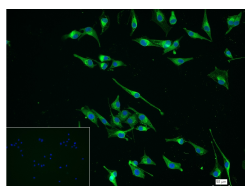
Purification: affinity purified by Protein A

Storage: 0.01M TBS (pH7.4) with 1% BSA, 0.02% Proclin300 and 50% Glycerol.

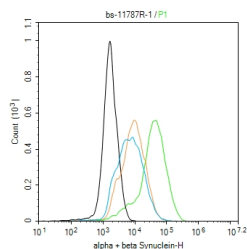
Shipped at 4°C. Store at -20°C for one year. Avoid repeated freeze/thaw cycles.

Background: Alpha-synuclein is a member of the synuclein family, which also includes beta- and gamma-synuclein. Synucleins are abundantly expressed in the brain and alpha- and beta-synuclein inhibit phospholipase D2 selectively. SNCA may serve to integrate presynaptic signaling and membrane trafficking. Defects in SNCA have been implicated in the pathogenesis of Parkinson disease. SNCA peptides are a major component of amyloid plaques in the brains of patients with Alzheimer's disease. Alternatively spliced transcripts encoding different isoforms have been identified for this gene. [provided by RefSeq, Feb 2016].

VALIDATION IMAGES



4% Paraformaldehyde-fixed SK-MEL-28 (H) cell; Triton X-100 at r.t. for 20 min; Antibody incubation with (alpha + beta Synuclein) polyclonal Antibody, unconjugated (bs-11787R) 1:100, 90 min at 37°C; followed by conjugated Goat Anti-Rabbit IgG antibody (green, bs-40295G-FITC) at 37°C for 90 min, DAPI (blue, C02-04002) was used to stain the cell nuclei. PBS instead of the primary antibody was used as the blank control.



The SK-MEL-28(H) cells were incubated in 5%BSA to block non-specific protein-protein interactions (30 min at r.t.). Primary Antibody (green): Rabbit Anti-alpha + beta Synuclein antibody (bs-11787R): 1 μ g/ 10^6 cells; Secondary Antibody (white blue): Goat anti-Rabbit IgG-FITC (bs-40295G-FITC): 1 μ g/test. Isotype Control (orange): Rabbit IgG (bs-0295P). Blank control (black): PBS. Acquisition of 20,000 events was performed.