

bs-8663R**[Primary Antibody]**

BioSS
ANTIBODIES

www.bioss.com.cn

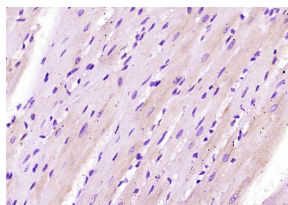
sales@bioss.com.cn

techsupport@bioss.com.cn

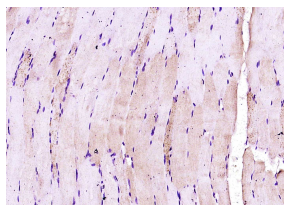
400-901-9800

CRLF1 Rabbit pAb**— DATASHEET —**

Host: Rabbit	Isotype: IgG	Applications: IHC-P (1:100-500)
Clonality: Polyclonal		IHC-F (1:100-500)
GeneID: 9244	SWISS: O75462	IF (1:100-500)
Target: CRLF1		Reactivity: Rat (predicted: Human, Mouse, Pig, Sheep, Cow, Chicken, Dog)
Immunogen: KLH conjugated synthetic peptide derived from human CRLF1: 201-300/422.		Predicted MW.: 43 kDa
Purification: affinity purified by Protein A		Subcellular Location: Secreted
Concentration: 1mg/ml		
Storage: 0.01M TBS (pH7.4) with 1% BSA, 0.02% Proclin300 and 50% Glycerol. Shipped at 4°C. Store at -20°C for one year. Avoid repeated freeze/thaw cycles.		
Background: CRLF1 is a 422 amino acid secreted protein that interacts with cells expressing ciliary neurotrophic factor receptors. A cytokine receptor subunit belonging to the type I cytokine receptor family and type 3 subfamily, CRLF1 is thought to play a role in fetal nervous system development and immunity. CRLF1 is highly expressed in stomach, placenta, heart, ovary, thyroid, bone marrow, appendix, lymph node, spleen, thymus and fetal lung, and promotes neuronal cell survival. CRLF3 is a 442 amino acid protein that contains one fibronectin type-III domain. CRLF3 is expressed in lesion actinic keratosis (AK) and skin and squamous cell carcinoma (SCC), and is thought to negatively regulate the G0/G1 phase of the cell cycle.		

— VALIDATION IMAGES —

Paraformaldehyde-fixed, paraffin embedded (rat heart tissue); Antigen retrieval by boiling in sodium citrate buffer (pH6.0) for 15min; Block endogenous peroxidase by 3% hydrogen peroxide for 20 minutes; Blocking buffer (normal goat serum) at 37°C for 30min; Antibody incubation with (CRLF1) Polyclonal Antibody, Unconjugated (bs-8663R) at 1:400 overnight at 4°C, followed by operating according to SP Kit(Rabbit) (sp-0023) instructions and DAB staining.



Paraformaldehyde-fixed, paraffin embedded (rat skeletal muscle); Antigen retrieval by boiling in sodium citrate buffer (pH6.0) for 15min; Block endogenous peroxidase by 3% hydrogen peroxide for 20 minutes; Blocking buffer (normal goat serum) at 37°C for 30min; Antibody incubation with (CRLF1) Polyclonal Antibody, Unconjugated (bs-8663R) at 1:400 overnight at 4°C, followed by operating according to SP Kit(Rabbit) (sp-0023) instructions and DAB staining.

— SELECTED CITATIONS —

- **[IF=3.5]** Yun-Ke Liu. et al. Application of integrated omics in aseptic loosening of prostheses after hip replacement. MOL MED REP. 2025 Mar;31(3):1-13 WB ;Human. 39749710
- **[IF=2.7]** Zhihua Lu. et al. ENO1 regulates IL-1 β -induced chondrocyte inflammation, apoptosis and matrix degradation possibly through the potential binding to CRLF1. TISSUE CELL. 2024 Jul;:102504 IF ;Human. 39116531

Important Note: This product as supplied is intended for research use only, not for use in human, therapeutic or diagnostic applications.