

bs-19928R**[Primary Antibody]****phospho-SMC3 (Ser1083) Rabbit pAb****Bioss**
ANTIBODIES

www.bioss.com.cn

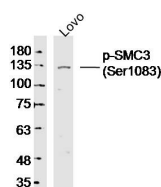
sales@bioss.com.cn

techsupport@bioss.com.cn

400-901-9800

— DATASHEET —

| | | |
|--|----------------------|---|
| Host: Rabbit | Isotype: IgG | Applications: WB (1:500-2000) |
| Clonality: Polyclonal | | Reactivity: Human (predicted: Mouse, Rat, Rabbit, Pig, Sheep, Cow, Dog, Horse) |
| GeneID: 9126 | SWISS: Q9UQE7 | Predicted MW.: 141 kDa |
| Target: SMC3 (Ser1083) | | Subcellular Location: Nucleus |
| Immunogen: KLH conjugated synthesised phosphopeptide derived from human SMC3 around the phosphorylation site of Ser1083: SG(p-S)QS- | | |
| Purification: affinity purified by Protein A | | |
| Concentration: 1mg/ml | | |
| Storage: 0.01M TBS (pH7.4) with 1% BSA, 0.02% Proclin300 and 50% Glycerol. Shipped at 4°C. Store at -20°C for one year. Avoid repeated freeze/thaw cycles. | | |
| Background: This gene belongs to the SMC3 subfamily of SMC proteins. The encoded protein occurs in certain cell types as either an intracellular, nuclear protein or a secreted protein. The nuclear form, known as structural maintenance of chromosomes 3, is a component of the multimeric cohesin complex that holds together sister chromatids during mitosis, enabling proper chromosome segregation. Post-translational modification of the encoded protein by the addition of chondroitin sulfate chains gives rise to the secreted proteoglycan bamacan, an abundant basement membrane protein. [provided by RefSeq, Jul 2008] | | |

— VALIDATION IMAGES —

Sample: LOVO Cell (Human) Lysate at 40 ug
Primary: Anti-p-SMC3(Ser1083) (bs-19928R) at 1/300 dilution
Secondary: IRDye800CW Goat Anti-Rabbit IgG at 1/20000 dilution
Predicted band size: 141 kD
Observed band size: 135 kD