

---

## ETV2 Rabbit pAb

Catalog Number: bs-12341R

Target Protein: ETV2

Concentration: 1mg/ml

Form: Liquid

Host: Rabbit

Clonality: Polyclonal

Isotype: IgG

Applications: Flow-Cyt (1µg/Test)

Reactivity: Human (predicted:Mouse, Rat, Pig, Sheep, Cow, Dog, Horse)

Predicted MW: 37 kDa

Entrez Gene: 2116

Swiss Prot: O00321

Source: KLH conjugated synthetic peptide derived from Human ETV2/ER71: 251-342/342.

Purification: affinity purified by Protein A

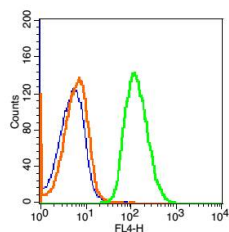
Storage: 0.01M TBS (pH7.4) with 1% BSA, 0.02% Proclin300 and 50% Glycerol.

Shipped at 4°C. Store at -20°C for one year. Avoid repeated freeze/thaw cycles.

**Background:** ER71 is a 341 amino acid member of the ETS protein family. Localized to the nucleus, ER71 contains one ETS DNA-binding domain which binds to DNA sequences containing the consensus pentanucleotide 5'-CGGA[AT]-3'. The gene encoding ER71 maps to human chromosome 19, which consists of around 63 million bases with over 1,400 genes, making up over 2% of human genomic DNA. Chromosome 19 is recognized for having the greatest gene density of the human chromosomes. It is the genetic home for a number of immunoglobulin superfamily members, including the killer cell and leukocyte Ig-like receptors, a number of ICAMs, the CEACAM and PSG family and Fcγ receptors. Key genes for eye color and hair color also map to chromosome 19. Peutz-Jeghers syndrome, spinocerebellar ataxia type 6, the stroke disorder CADASIL, hypercholesterolemia and insulin-dependent diabetes have been linked to chromosome 19. Translocations with chromosome 19 and chromosome 14 can be seen in some lymphoproliferative disorders and typically involve the proto-oncogene BCL3.

### VALIDATION IMAGES

---



Blank control: Hela Cells (fixed with 2% paraformaldehyde (10 min) and then permeabilized with ice-cold 90% methanol for 30 min on ice). Primary Antibody: Rabbit Anti-ETV2/AF647 Conjugated antibody (bs-12341R-AF647), Dilution:  $1\mu\text{g}$  in  $100\mu\text{L}$  1X PBS containing 0.5% BSA; Isotype Control Antibody: Rabbit IgG/AF647 (orange), used under the same conditions.