

**bs-12340R****[ Primary Antibody ]****VNN2 Rabbit pAb****Bioss**  
ANTIBODIES

www.bioss.com.cn

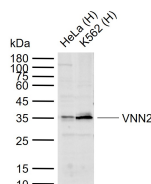
sales@bioss.com.cn

techsupport@bioss.com.cn

400-901-9800

**— DATASHEET —**

<b>Host:</b> Rabbit	<b>Isotype:</b> IgG	<b>Applications:</b> WB (1:500-2000)
<b>Clonality:</b> Polyclonal		
<b>GeneID:</b> 8875	<b>SWISS:</b> Q95498	
<b>Target:</b> VNN2		
<b>Immunogen:</b> KLH conjugated synthetic peptide derived from Human VNN2: 101-180/520.		
<b>Purification:</b> affinity purified by Protein A		<b>Reactivity:</b> Human (predicted: Mouse, Rat, Rabbit, Sheep, Cow, Dog, Horse)
<b>Concentration:</b> 1mg/ml		<b>Predicted MW.:</b> 59 kDa
<b>Storage:</b> 0.01M TBS (pH7.4) with 1% BSA, 0.02% Proclin300 and 50% Glycerol. Shipped at 4°C. Store at -20°C for one year. Avoid repeated freeze/thaw cycles.		<b>Subcellular Location:</b> Cell membrane
<b>Background:</b> Vanin-2 is a 520 amino acid GPI-anchor protein that belongs to the CN hydrolase family and BTD/VNN subfamily. Widely expressed with high expression in spleen and blood, vanin-2 is suggested to be involved in thymus homing of bone marrow cells, regulation of Integrin $\beta$ 2-mediated cell adhesion, and migration and motility of neutrophils. Vanin-2 exists as five alternatively spliced isoforms and is encoded by a gene mapping to human chromosome 6q23.2.		

**— VALIDATION IMAGES —**

Sample: Lane 1: Human HeLa cell lysates Lane 2:  
Human K562 cell lysates Primary: Anti-VNN2  
(bs-12340R) at 1/1000 dilution Secondary:  
IRDye800CW Goat Anti-Rabbit IgG at 1/20000  
dilution Predicted band size: 59 kDa Observed  
band size: 35 kDa