

LRRC25 Rabbit pAb

Catalog Number: bs-12339R

Target Protein: LRRC25

Concentration: 1mg/ml

Form: Liquid

Host: Rabbit

Clonality: Polyclonal

Isotype: IgG

Applications: WB (1:500-2000)

Reactivity: Human

Predicted MW: 31 kDa

Entrez Gene: 126364

Swiss Prot: Q8N386

Source: KLH conjugated synthetic peptide derived from human LRRC25: 81-180/305.

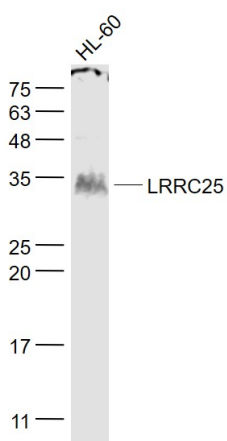
Purification: affinity purified by Protein A

Storage: 0.01M TBS (pH7.4) with 1% BSA, 0.02% Proclin300 and 50% Glycerol.

Shipped at 4°C. Store at -20°C for one year. Avoid repeated freeze/thaw cycles.

Background: LRRC25 is a 305 amino acid protein that contains two LRR repeats. LRRC25 is a single-pass type I membrane protein that is expressed in monocyte-derived dendritic cells (MDDC), granulocytes, monocytes, plasmacytoid dendritic cells (PDC), B-lymphocytes, peripheral blood leukocytes, spleen and bone marrow, with lower levels in lymph nodes, fetal liver, and appendix. LRRC25 may play a role in the activation of cells of innate and acquired immunity.

VALIDATION IMAGES



Sample: HL-60(Human) Cell Lysate at 30 ug Primary: Anti- LRRC25 (bs-12339R) at 1/1000 dilution Secondary: IRDye800CW Goat Anti-Rabbit IgG at 1/20000 dilution Predicted band size: 31 kD Observed band size: 31 kD

PRODUCT SPECIFIC PUBLICATIONS

[IF=6] Bingnan Chen. et al. Alternative polyadenylation regulates the translation of metabolic and inflammation-related proteins in adipose tissue of gestational diabetes mellitus. COMPUT STRUCT BIOTEC. 2024 Dec;23:1298 WB ; Human . 38560280