

bs-0334R**[Primary Antibody]****BioSS**
ANTIBODIES

www.bioss.com.cn

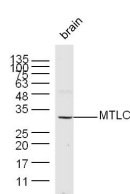
sales@bioss.com.cn

techsupport@bioss.com.cn

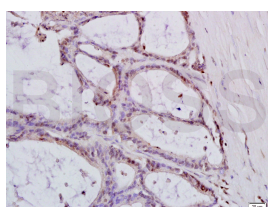
400-901-9800

MTLC Rabbit pAb**— DATASHEET —**

Host: Rabbit	Isotype: IgG	Applications: WB (1:500-2000)
Clonality: Polyclonal		IHC-P (1:100-500)
GeneID: 80177	SWISS: Q8N699	IHC-F (1:100-500)
Target: MTLC		IF (1:100-500)
Immunogen: KLH conjugated synthetic peptide derived from human MTLC: 21-100/235.		Reactivity: Human, Mouse (predicted: Rat, Dog)
Purification: affinity purified by Protein A		
Concentration: 1mg/ml		Predicted MW.: 27 kDa
Storage: 0.01M TBS (pH7.4) with 1% BSA, 0.02% Proclin300 and 50% Glycerol. Shipped at 4°C. Store at -20°C for one year. Avoid repeated freeze/thaw cycles.		Subcellular Location: Nucleus
Background: MTLC is a 235 amino acid nuclear protein that is thought to regulate certain myc target genes. Downregulated in gastric cancer tissues, MTLC is expressed in the hepatocellular carcinoma cell line, Bel7402. Overexpression of MTLC is thought to influence tumorigenic conversion, promotion of apoptosis genomic instability and inhibition of hematopoietic differentiation. The gene encoding MTLC maps to human chromosome 6, which contains 170 million base pairs and comprises nearly 6% of the human genome. Deletion of a portion of the q arm of chromosome 6 is associated with early onset intestinal cancer, suggesting the presence of a cancer susceptibility locus. Additionally, Porphyria cutanea tarda, Parkinson's disease, Stickler syndrome and a susceptibility to bipolar disorder are all associated with genes that map to chromosome 6.		

— VALIDATION IMAGES —

Sample: Brain (Mouse) Lysate at 40 ug Primary:
Anti- MTLC (bs-0334R) at 1/300 dilution
Secondary: IRDye800CW Goat Anti-Rabbit IgG at
1/10000 dilution Predicted band size: 27 kD
Observed band size: 31 kD



Tissue/cell: human colon carcinoma; 4%
Paraformaldehyde-fixed and paraffin-
embedded; Antigen retrieval: citrate buffer (0.01M, pH 6.0), Boiling bathing for 15min; Block
endogenous peroxidase by 3% Hydrogen
peroxide for 30min; Blocking buffer (normal goat
serum, C-0005) at 37°C for 20 min; Incubation:
Anti-MTLC Polyclonal Antibody,
Unconjugated(bs-0334R) 1:200, overnight at
4°C, followed by conjugation to the secondary
antibody(SP-0023) and DAB(C-0010) staining

— SELECTED CITATIONS —

- **[IF=14.3]** Li Xu. et al. LIF Promotes Sec15b-Mediated STAT3 Exosome Secretion to Maintain Stem Cell Pluripotency in Mouse Embryonic Development. ADV SCI. 2024 Oct;:2407971 WB ;Mouse. 39475099
- **[IF=3.487]** Zhang C et al. MiR-429 regulates rat liver regeneration and hepatocyte proliferation by targeting

Important Note: This product as supplied is intended for research use only, not for use in human, therapeutic or diagnostic applications.

JUN/MYC/BCL2/CCND1 signaling pathway. Cell Signal. 2018 Oct;50:80-89. WB ;Rat. 29958992

- **[IF=3.414]** Li Y et al. Yin Yang Gong Ji pill is an ancient formula with antitumor activity against hepatoma cells J Ethnopharmacol. 2019 Oct 3;248:112267. WB ;Human&Mouse. 31586691