

bs-22199R**[Primary Antibody]****MyoD1/Myf3 Rabbit pAb****Bioss**
ANTIBODIES

www.bioss.com.cn

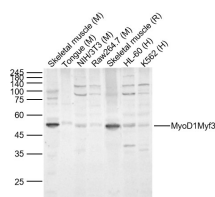
sales@bioss.com.cn

techsupport@bioss.com.cn

400-901-9800

— DATASHEET —

Host: Rabbit	Isotype: IgG	Applications: WB (1:500-2000)
Clonality: Polyclonal		Reactivity: Human, Mouse, Rat (predicted: Rabbit, Pig, Sheep, Cow, Dog)
GeneID: 4654	SWISS: P15172	Predicted MW.: 35 kDa
Target: MyoD1/Myf3		Subcellular Location: Nucleus
Immunogen: KLH conjugated synthetic peptide derived from human MyoD1/Myf3 : 31-130/318.		
Purification: affinity purified by Protein A		
Concentration: 1mg/ml		
Storage: 0.01M TBS (pH7.4) with 1% BSA, 0.02% Proclin300 and 50% Glycerol. Shipped at 4°C. Store at -20°C for one year. Avoid repeated freeze/thaw cycles.		
Background: This gene encodes a nuclear protein that belongs to the basic helix-loop-helix family of transcription factors and the myogenic factors subfamily. It regulates muscle cell differentiation by inducing cell cycle arrest, a prerequisite for myogenic initiation. The protein is also involved in muscle regeneration. It activates its own transcription which may stabilize commitment to myogenesis. [provided by RefSeq, Jul 2008]		

— VALIDATION IMAGES —

Sample: Lane 1: Mouse Skeletal muscle Lysates
 Lane 2: Mouse Tongue Lysates Lane 3: Mouse NIH/3T3 cell Lysates Lane 4: Mouse Raw264.7 cell Lysates Lane 5: Rat Skeletal muscle Lysates
 Lane 6: Human HL-60 cell Lysates Lane 7: Human K562 cell Lysates
 Primary: Anti-MyoD1/Myf3 (bs-22199R) at 1/1000 dilution
 Secondary: IRDye800CW Goat Anti-Rabbit IgG at 1/20000 dilution
 Predicted band size: 35kDa
 Observed band size: 50kDa