

bs-22181R**[Primary Antibody]**

Integrin alpha 4 Rabbit pAb

Bioss
ANTIBODIES

www.bioss.com.cn

sales@bioss.com.cn

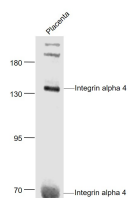
techsupport@bioss.com.cn

400-901-9800

— DATASHEET —

Host: Rabbit	Isotype: IgG	Applications: WB (1:500-2000)
Clonality: Polyclonal		Reactivity: Human, Mouse (predicted: Rat)
GeneID: 3676	SWISS: P13612	
Target: Integrin alpha 4		Predicted MW.: 111 kDa
Immunogen: KLH conjugated synthetic peptide derived from human Integrin alpha 4 : 191-290/1032.		Subcellular Location: Cell membrane
Purification: affinity purified by Protein A		
Concentration: 1mg/ml		
Storage: 0.01M TBS (pH7.4) with 1% BSA, 0.02% Proclin300 and 50% Glycerol. Shipped at 4°C. Store at -20°C for one year. Avoid repeated freeze/thaw cycles.		
Background: Integrin alpha 4 beta 7, also known as, the lymphocyte Peyer's patch adhesion molecule (LPAM1) is a member of the integrin family of cell surface receptors. It is expressed primarily on mucosal lymphocytes, but is also present on NK cells and eosinophils. The alpha 4 beta 7 heterodimer mediates the binding of lymphocytes to its ligand, mucosal vascular addressin (MAdCAM1) on the high endothelial venules, thereby directing the homing of lymphocytes into Peyer's patches and intestinal lamina propria.		

— VALIDATION IMAGES —



Sample: Placenta (Mouse) Lysate at 40 ug
Primary: Anti- Semaphorin 5B (bs-22181R) at
1/1000 dilution Secondary: IRDye800CW Goat
Anti-Rabbit IgG at 1/20000 dilution Predicted
band size: 140/68 kD Observed band size: 140/68
kD