

**bs-10681R****[ Primary Antibody ]****phospho-TYRO3 (Tyr681) Rabbit pAb****BioSS**  
**ANTIBODIES**

www.bioss.com.cn

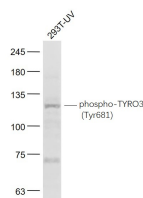
sales@bioss.com.cn

techsupport@bioss.com.cn

400-901-9800

**— DATASHEET —**

|  |                      |   |
|--|----------------------|---|
| <b>Host:</b> Rabbit  | <b>Isotype:</b> IgG  | <b>Applications:</b> WB (1:500-2000)  |
| <b>Clonality:</b> Polyclonal   |                      | <b>Reactivity:</b> Human (predicted: Mouse, Rat, Rabbit, Pig, Sheep, Cow, Dog, Horse) |
| <b>GeneID:</b> 7301  | <b>SWISS:</b> Q06418 | <b>Predicted MW.:</b> 94 kDa  |
| <b>Target:</b> TYRO3 (Tyr681)  |                      | <b>Subcellular Location:</b> Cell membrane  |
| <b>Immunogen:</b> KLH conjugated synthesised phosphopeptide derived from human TYRO3 around the phosphorylation site of Tyr681: KI(p-Y)SG.   |                      |   |
| <b>Purification:</b> affinity purified by Protein A  |                      |   |
| <b>Concentration:</b> 1mg/ml   |                      |   |
| <b>Storage:</b> 0.01M TBS (pH7.4) with 1% BSA, 0.02% Proclin300 and 50% Glycerol.<br>Shipped at 4°C. Store at -20°C for one year. Avoid repeated freeze/thaw cycles.   |                      |   |
| <b>Background:</b> The gene is part of a 3-member transmembrane receptor kinase receptor family with a processed pseudogene distal on chromosome 15. The encoded protein is activated by the products of the growth arrest-specific gene 6 and protein S genes and is involved in controlling cell survival and proliferation, spermatogenesis, immunoregulation and phagocytosis. The encoded protein has also been identified as a cell entry factor for Ebola and Marburg viruses. [provided by RefSeq, May 2010] |                      |   |

**— VALIDATION IMAGES —**

Sample: 293T-UV(Human) Cell Lysate at 30 ug

Primary: Anti-phospho-TYRO3

(Tyr681)bs-10681R at 1/1000 dilution

Secondary: IRDye800CW Goat Anti-Rabbit IgG at

1/20000 dilution Predicted band size: 94 kD

Observed band size: 124 kD