

bs-14571R**[Primary Antibody]****Bioss**
ANTIBODIES

www.bioss.com.cn

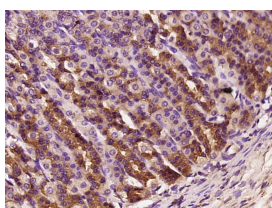
sales@bioss.com.cn

techsupport@bioss.com.cn

400-901-9800

ELOVL1 Rabbit pAb**— DATASHEET —**

| | | |
|--|----------------------|--|
| Host: Rabbit | Isotype: IgG | Applications: IHC-P (1:100-500) IHC-F (1:100-500) IF (1:100-500) Reactivity: Rat (predicted: Human, Mouse, Dog) Predicted MW.: 33 kDa Subcellular Location: Cytoplasm |
| Clonality: Polyclonal | | |
| GeneID: 64834 | SWISS: Q9BW60 | |
| Target: ELOVL1 | | |
| Immunogen: KLH conjugated synthetic peptide derived from human ELOVL1: 201-279/279. | | |
| Purification: affinity purified by Protein A | | |
| Concentration: 1mg/ml | | |
| Storage: 0.01M TBS (pH7.4) with 1% BSA, 0.02% Proclin300 and 50% Glycerol. Shipped at 4°C. Store at -20°C for one year. Avoid repeated freeze/thaw cycles. | | |
| Background: Elongation of very long chain fatty acid-like (ELOVL) proteins 1-6 are members of the ELO family of proteins, which play an important role in tissue-specific biosynthesis of very long chain fatty acids and sphingolipids. The ELOVL proteins act as catalysts in fatty acid elongation reduction and localize to the endoplasmic reticulum (ER). Elongation of very long chain fatty acids protein 1 (ELOVL1), also referred to as Ssc1, is the human homolog of the yeast ELO3 protein. It is expressed in a variety of tissues and at especially high levels in stomach, skin, intestine, kidney and lung. ELOVL1 participates in the elongation of very long chain saturated and monounsaturated fatty acids of up to 26 carbons and may be required for the development of a barrier in epithelial cells and skin. ELOVL1 is also important for the formation of Myelin in the central nervous system. Impaired ELOVL1 activity may be associated with disorders of sphingolipid metabolism. | | |

— VALIDATION IMAGES —

Paraformaldehyde-fixed, paraffin embedded (rat stomach tissue); Antigen retrieval by boiling in sodium citrate buffer (pH6.0) for 15min; Block endogenous peroxidase by 3% hydrogen peroxide for 20 minutes; Blocking buffer (normal goat serum) at 37°C for 30min; Antibody incubation with (ELOVL1) Polyclonal Antibody, Unconjugated (bs-14571R) at 1:400 overnight at 4°C, followed by operating according to SP Kit(Rabbit) (sp-0023) instructions and DAB staining.