

bs-14570R**[Primary Antibody]****ELOV3 Rabbit pAb****BioSS**
ANTIBODIES

www.bioss.com.cn

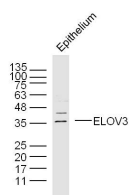
sales@bioss.com.cn

techsupport@bioss.com.cn

400-901-9800

— DATASHEET —

Host: Rabbit	Isotype: IgG	Applications: WB (1:500-2000)
Clonality: Polyclonal		Reactivity: Mouse (predicted: Human, Rat, Dog)
GeneID: 83401	SWISS: Q9HB03	
Target: ELOV3		Predicted MW.: 31 kDa
Immunogen: KLH conjugated synthetic peptide derived from human ELOV3: 101-200/270.		Subcellular Location: Cytoplasm
Purification: affinity purified by Protein A		
Concentration: 1mg/ml		
Storage: 0.01M TBS (pH7.4) with 1% BSA, 0.02% Proclin300 and 50% Glycerol. Shipped at 4°C. Store at -20°C for one year. Avoid repeated freeze/thaw cycles.		
Background: This gene encodes a protein that belongs to the GNS1/SUR4 family. Members of this family play a role in elongation of long chain fatty acids to provide precursors for synthesis of sphingolipids and ceramides. [provided by RefSeq, Jul 2013].		

— VALIDATION IMAGES —

Protein: Epithelium(mouse) lysate at 30ug;
Primary: rabbit Anti-ELOV3 (bs-14570R) at 1:300;
Secondary: HRP conjugated Goat-Anti-rabbit IgG(bs-0295G-HRP) at 1: 5000; Predicted band size: 31 kD Observed band size: 36kD