
ELMOD2 Rabbit pAb

Catalog Number: bs-14568R

Target Protein: ELMOD2

Concentration: 1mg/ml

Form: Liquid

Host: Rabbit

Clonality: Polyclonal

Isotype: IgG

Applications: WB (1:500-2000)

Reactivity: Human (predicted:Mouse, Rat, Rabbit, Cow, Dog, Horse)

Predicted MW: 35 kDa

Entrez Gene: 255520

Swiss Prot: Q8IZ81

Source: KLH conjugated synthetic peptide derived from human ELMOD2: 151-250/293.

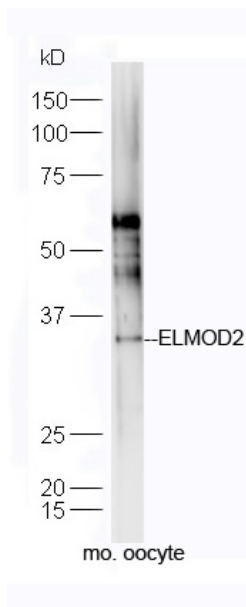
Purification: affinity purified by Protein A

Storage: 0.01M TBS (pH7.4) with 1% BSA, 0.02% Proclin300 and 50% Glycerol.

Shipped at 4°C. Store at -20°C for one year. Avoid repeated freeze/thaw cycles.

Background: ELMOD2 is a 293 amino acid protein that is one of six human proteins that contain an ELMO domain. ELMOD2 is thought to interact with DOCK1 through a SH3-binding site, which enhances the guanine nucleotide exchange factor (GEF) activity of DOCK1. Therefore, ELMOD2 may also be part of a complex with DOCK1 and Rac1 that is required to activate Rac Rho small GTPases. Evidence of decreased ELMOD2 expression in lung of individuals with familial idiopathic pulmonary fibrosis (IPF) suggests that defects in the gene encoding ELMOD2 may be linked to susceptibility for familial IPF.

VALIDATION IMAGES



Sample: oocyte (Mouse) CellLysate at 40 ug Primary: Anti-ELMOD2 (bs-14568R) at 1/300 dilution Secondary: IRDye800CW Goat Anti-Rabbit IgG at 1/20000 dilution Predicted band size: 35 kD Observed band size: 35 kD