

bs-13290R**[Primary Antibody]****GAS41 Rabbit pAb****Bioss**
ANTIBODIES

www.bioss.com.cn

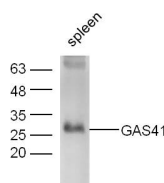
sales@bioss.com.cn

techsupport@bioss.com.cn

400-901-9800

— DATASHEET —

Host: Rabbit	Isotype: IgG	Applications: WB (1:500-2000)
Clonality: Polyclonal		Reactivity: Mouse (predicted: Human, Rat, Rabbit, Cow, Zebrafish, Chicken, Horse, Xenopus laevis)
GeneID: 8089	SWISS: O95619	Predicted MW.: 26 kDa
Target: GAS41		Subcellular Location: Nucleus
Immunogen: KLH conjugated synthetic peptide derived from human GAS41: 151-227/227.		
Purification: affinity purified by Protein A		
Concentration: 1mg/ml		
Storage: 0.01M TBS (pH7.4) with 1% BSA, 0.02% Proclin300 and 50% Glycerol. Shipped at 4°C. Store at -20°C for one year. Avoid repeated freeze/thaw cycles.		
Background: Gene amplification is associated with tumor stage and progression in human gliomas. Several amplified loci are identified and comprise multiple genes. The glioma amplified sequence 41 (GAS41) is an evolutionarily conserved eukaryotic protein found in diverse species. GAS41 is related to the AF-9 and ENL proteins, which are putative transcription factors in some acute leukemias, and interacts with a component of the nuclear matrix, NuMA, in interphase cells. GAS41 has a dotted staining pattern in interphase nuclei and a uniform distribution in mitotic cells. GAS41 is ubiquitously expressed, with the highest levels of expression in human brain. In neuroblastoma, GAS41 is located in the nucleoli, but not in the nucleoplasm. GAS41 also binds to the MLL fusion partner AF10, which is involved in two distinct chromosomal translocations associated with hematologic malignancy. In addition, GAS41 interacts with INI1 (Integrase Interactor), which is a human homologue of the yeast SNF5 protein, a component of the SWI/SNF complex. The GAS41 gene maps to human chromosome 12q13-q15.		

— VALIDATION IMAGES —

Sample: Spleen (Mouse) Lysate at 40 ug Primary:

Anti-GAS41(bs-13290R) at 1/300 dilution

Secondary: IRDye800CW Goat Anti-Rabbit IgG at

1/20000 dilution Predicted band size: 26 kD

Observed band size: 26 kD