

bs-11014R**[Primary Antibody]****ILVBL Rabbit pAb****Bioss**
ANTIBODIES

www.bioss.com.cn

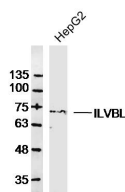
sales@bioss.com.cn

techsupport@bioss.com.cn

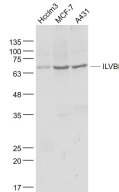
400-901-9800

— DATASHEET —

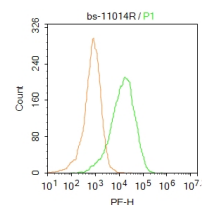
Host: Rabbit	Isotype: IgG	Applications: WB (1:500-2000) Flow-Cyt (3ug/Test)
Clonality: Polyclonal		Reactivity: Human (predicted: Mouse, Rat, Pig, Dog, Horse)
GeneID: 10994	SWISS: A1L0T0	
Target: ILVBL		
Immunogen: KLH conjugated synthetic peptide derived from human ILVBL: 301-400/632.		
Purification: affinity purified by Protein A		
Concentration: 1mg/ml		Predicted MW.: 68 kDa
Storage: 0.01M TBS (pH7.4) with 1% BSA, 0.02% Proclin300 and 50% Glycerol. Shipped at 4°C. Store at -20°C for one year. Avoid repeated freeze/thaw cycles.		Subcellular Location: Cell membrane
Background: ILVBL is a 632 amino acid single-pass membrane protein that belongs to the TPP enzyme family. Expressed in the majority of tissues, ILVBL has the highest level of expression in heart, pancreas and placenta. ILVBL is highly homologous to several bacterial enzymes, including the B isozyme of the large catalytic subunit of E. coli acetohydroxy-acid synthase (AHAS) and the oxalyl-coA decarboxylase of O. formigenes, that utilize thiamine pyrophosphate as a cofactor. ILVBL binds one magnesium ion and one thiamine pyrophosphate per subunit, and may catalyze the initial step in branched-chain amino acid biosynthesis. The gene encoding ILVBL maps to human chromosome 19p13.12 and mouse chromosome 10 C1.		

— VALIDATION IMAGES —

Sample: HepG2 Cell (Human) Lysate at 30 ug
 Primary: Anti-ILVBL (bs-11014R) at 1/300 dilution
 Secondary: IRDye800CW Goat Anti-Rabbit IgG at 1/20000 dilution Predicted band size: 68kD
 Observed band size: 68kD



Sample: Hcclm3(Human) Cell Lysate at 30 ug
 MCF-7(Human) Cell Lysate at 30 ug
 A431(Human) Cell Lysate at 30 ug Primary: Anti-ILVBL (bs-11014R) at 1/1000 dilution Secondary: IRDye800CW Goat Anti-Rabbit IgG at 1/20000 dilution Predicted band size: 68 kD Observed band size: 68 kD



Blank control: HepG2. Primary Antibody (green line): Rabbit Anti-ILVBL antibody (bs-11014R)
 Dilution: 1μg /10⁶ cells; Isotype Control Antibody (orange line): Rabbit IgG . Secondary Antibody : Goat anti-rabbit IgG-PE Dilution: 1μg /test. Protocol The cells then incubated in 5%BSA to block non-specific protein-protein interactions for 30 min at room temperature .Cells stained with Primary Antibody for 30 min at room temperature. The secondary antibody used for 40 min at room temperature. Acquisition of 20,000 events was performed.